

**Catalog No.: RP03348LQ** **Recombinant**

Species	Gene ID	Swiss Prot
Human	5568	P22612

No tag

PRKACG; PKA C-gamma; cAMP-dependent protein kinase catalytic subunit gamma

<b>Source</b>	<b>Purification</b>
Baculovirus-Insect Cells	≥ 90 % as determined by SDS-PAGE; ≥ 90 % as determined by HPLC.

Calculated MW	Observed MW
40.5 kDa	30-40 kDa

< 1 EU/μg of the protein by LAL method.

Supplied as a 0.22 µm filtered solution in 50 mM Tris-HCl, 200 mM NaCl, 20% glycerol, 1 mM DTT. (pH 7.5). Contact us for customized product form or formulation.

Please use running water to thaw it quickly.

 | 400-999-6126

 | [cn.market@abclonal.com.cn](mailto:cn.market@abclonal.com.cn)

 | [www.abclonal.com.cn](http://www.abclonal.com.cn)

cAMP-dependent protein kinase catalytic subunit gamma is an enzyme that in humans is encoded by the PRKACG gene. Cyclic AMP-dependent protein kinase (PKA) consists of two catalytic subunits and a regulatory subunit dimer. This gene encodes the gamma form of its catalytic subunit. The gene is intronless and is thought to be a retrotransposon derived from the gene for the alpha form of the PKA catalytic subunit. And PRKACG has been shown to interact with Ryanodine receptor 2.

Recombinant Human PKAC gamma/PRKACG Protein is produced by Baculovirus-Insect Cells expression system. The target protein is expressed with sequence (Gly2-Phe351) of Human PRKACG (Accession #P22612) fused with No tag.

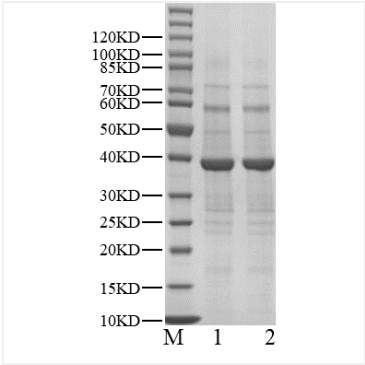
The activity of PRKACG is based on the MSA technology, and the content and ratio of the substrate and the product are directly separated and detected in real time and dynamically by the different migration rates of the substrate and the product after the enzymatic reaction.

Store at -70°C. This product is stable at  $\leq -70^{\circ}\text{C}$  for up to 1 year from the date of receipt. For optimal storage, aliquot into smaller quantities after centrifugation and store at recommended temperature.

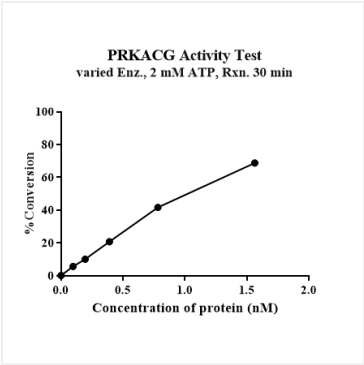
Aliquots below 10  $\mu$ L are not advisable. Product must not be stored in diluted solutions. Avoid repeated freeze-thaw cycles.

Avoid repeated freeze/thaw cycles.

Validation Data



Recombinant Human PKAC gamma/PRKACG Kinase was determined by SDS-PAGE under reducing (R) and non-reducing (NR) conditions.



The activity of PRKACG is based on the MSA technology, and the content and ratio of the substrate and the product are directly separated and detected in real time and dynamically by the different migration rates of the substrate and the product after the enzymatic reaction.