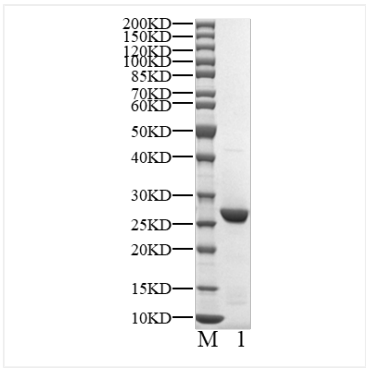
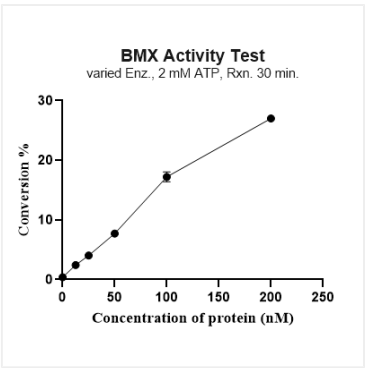


* □□□□□□□□□□□□□□□□□□□□

Validation Data



Recombinant Human BMX/NTK38/ETK Kinase was determined by SDS-PAGE under reducing conditions with Coomassie Blue.



The activity of BMX is based on the MSA technology, and the content and ratio of the substrate and the product are directly separated and detected in real time and dynamically by the different migration rates of the substrate and the product after the enzymatic reaction.