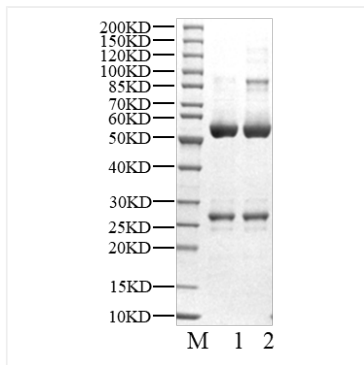
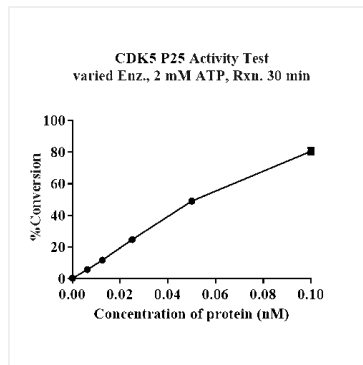




## Validation Data



Recombinant Human CDK5&p25 Kinase was determined by SDS-PAGE under reducing (R) and non-reducing (NR) conditions.



The activity of CDK5/p25 is based on the MSA technology, and the content and ratio of the substrate and the product are directly separated and detected in real time and dynamically by the different migration rates of the substrate and the product after the enzymatic reaction.