

Recombinant Mouse Siglec-10 Protein

Catalog No.: RP03262 **Recombinant**

Sequence Information

Species	Gene ID	Swiss Prot
Mouse	243958	Q80ZE3

Tags

C-hFc

Synonyms

SIGLEC10; SiglecG; Siglec-G;
MGC126774; PRO940; Siglec10; SLG2;
sialic acid-binding Ig-like lectin 10;
Siglec-10; siglec-like gene 2; Siglec-like
protein 2; SLG2sialic acid binding Ig-like
lectin 10 Ig-like lectin 7

Product Information

Source	Purification
HEK293 cells	≥ 95 % as determined by SDS- PAGE.

Calculated MW	Observed MW
85.6 kDa	110-135 kDa

Endotoxin

< 1 EU/μg of the protein by LAL method.

Formulation

Lyophilized from a 0.22 μm filtered solution of PBS, pH 7.4. Contact us for customized product form or formulation.

Reconstitution

Centrifuge the vial before opening. Reconstitute to a concentration of 0.1-0.5 mg/mL in sterile distilled water. Avoid vortex or vigorously pipetting the protein. For long term storage, it is recommended to add a carrier protein or stabilizer (e.g. 0.1% BSA, 5% HSA, 10% FBS or 5% Trehalose), and aliquot the reconstituted protein solution to minimize free-thaw cycles.

Contact

☎ | 400-999-6126

✉ | cn.market@abclonal.com.cn

Background

Siglecs (sialic acid binding Ig-like lectins) belong to the immunoglobulin superfamily. Siglec-G is the apparent ortholog of human Siglec-10. It is expressed by mature B cells, but significant levels of transcript were also detected in DC, myeloid cells, and to a lesser extent, T cells. Mature Siglec-G consists of a 526 amino acid (aa) extracellular domain (ECD), a 21 aa transmembrane segment, and a 124 aa cytoplasmic domain. Siglec-G is a member of the CD33-related Siglec family in the mouse, and is involved in negative regulation of B-cell antigen receptor signaling and specifically acts on B1 cells to inhibit Ca²⁺ signaling, cellular expansion and antibody secretion.

Basic Information

Description

Recombinant Mouse Siglec-10 Protein is produced by Mammalian expression system. The target protein is expressed with sequence (Met19-Lys543) of mouse Siglec-10 (Accession #Q80ZE3) fused with hFc tag at the C-terminus.

Bio-Activity

Shipping

The product is shipped at ambient temperature. Upon receipt, store it immediately at the temperature recommended below.

Storage

Store at -20°C. Store the lyophilized protein at -20°C to -80 °C up to 1 year from the date of receipt.

After reconstitution, the protein solution is stable at -20°C for 3 months, at 2-8°C for up to 1 week.

Avoid repeated freeze/thaw cycles.

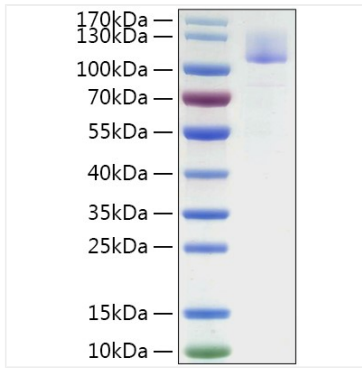
Operational Notes

For your safety and health, please wear a lab coat and disposable gloves for handling.



| www.abclonal.com.cn

Validation Data



Recombinant Mouse Siglec-10 Protein was determined by SDS-PAGE under reducing conditions with Coomassie Blue.