

# Recombinant Human Gelsolin/GSN Protein

Catalog No.: RP03183 **Recombinant**

## Sequence Information

<b>Species</b>	<b>Gene ID</b>	<b>Swiss Prot</b>
Human	2934	P06396-1

### Tags

C-mFc

### Synonyms

Gelsolin; GSN; AGEL; Actin-depolymerizing factor; ADF; Brevin

## Product Information

<b>Source</b>	<b>Purification</b>
HEK293 cells	≥ 90 % as determined by SDS-PAGE.

<b>Calculated MW</b>	<b>Observed MW</b>
109.3 KDa	115-125 KDa

### Endotoxin

&lt; 1 EU/μg of the protein by LAL method.

### Formulation

Lyophilized from a 0.22 μm filtered solution of 20mM Tris-HCl, 150mM NaCl, 1mM EDTA, 1mM DTT, 5% Trehalose, 0.1% Triton X-100, pH 8.0. Contact us for customized product form or formulation.

### Reconstitution

Centrifuge the vial before opening. Reconstitute to a concentration of 0.1-0.5 mg/mL in sterile distilled water. Avoid vortex or vigorously pipetting the protein. For long term storage, it is recommended to add a carrier protein or stabilizer (e.g. 0.1% BSA, 5% HSA, 10% FBS or 5% Trehalose), and aliquot the reconstituted protein solution to minimize free-thaw cycles.

## Contact

 | 400-999-6126 | [cn.market@abclonal.com.cn](mailto:cn.market@abclonal.com.cn)

## Background

Gelsolin is a calcium-activated actin filament severing and capping protein found in many cell types and as a secreted form in the plasma of vertebrates. Gelsolin is composed of six of these domains, termed G1-6. Some reaseraches show that gelsolin can act as a transcriptional cofactor in signal transduction and its own expression and function can be influenced by epigenetic changes. The difference in the expression levels of cytoplasmic and plasma gelsolin suggests that these two different forms of gelsolin may play different roles after cardiac injury. Plasma gelsolin, as an important component of the EASS, may have evolved to rapidly clear actin filaments from the circulation that are released by injured or dead cells.

## Basic Information

### Description

Recombinant Human Gelsolin/GSN Protein is produced by HEK293 cells expression system. The target protein is expressed with sequence (Ala28-Ala782) of Human Gelsolin/GSN (Accession #NP\_000168.1) fused with mouse IgG1 Fc tag at the C-terminus.

### Bio-Activity

### Shipping

The product is shipped at ambient temperature. Upon receipt, store it immediately at the temperature recommended below.

### Storage

Store at -20°C. Store the lyophilized protein at -20°C to -80 °C up to 1 year from the date of receipt.

After reconstitution, the protein solution is stable at -20°C for 3 months, at 2-8°C for up to 1 week.

Avoid repeated freeze/thaw cycles.

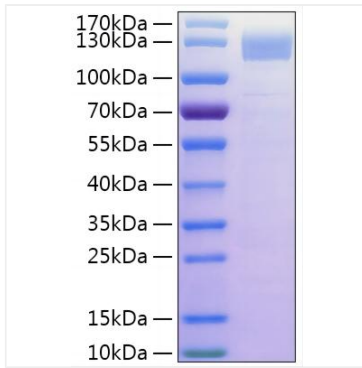
### Operational Notes

For your safety and health, please wear a lab coat and disposable gloves for handling.



## Validation Data

---



Recombinant Human Gelsolin/GSN Protein was determined by SDS-PAGE under reducing conditions with Coomassie Blue.