

Recombinant Human Plasma Kallikrein/KLKB1 Protein

Catalog No.: RP02872

Recombinant

Sequence Information

Species	Gene ID	Swiss Prot
Human	3818	P03952

Tags

C-His

Synonyms

KLKB1;KLK3;PKK;PKKD;PPK

Product Information

Source

HEK293 cells

Purification

> 95% as determined by SEC-HPLC.

Endotoxin

<1EU/μg

Formulation

Lyophilized from a 0.22 μm filtered solution of 20mM NaAc, 150mM NaCl, pH5.0.

Reconstitution

Centrifuge the vial before opening. Reconstitute to a concentration of 0.1-0.5 mg/mL in 20mM NaAc, 150mM NaCl, pH5.0. Avoid vortex or vigorously pipetting the protein. For long term storage, it is recommended to add a carrier protein or stabilizer (e.g. 0.1% BSA, 5% HSA, 10% FBS or 5% Trehalose), and aliquot the reconstituted protein solution to minimize freeze-thaw cycles.

Contact

☎ | 400-999-6126

✉ | cn.market@abclonal.com.cn

🌐 | www.abclonal.com.cn

Background

Plasma kallikrein, also known as Fletcher factor or kallikrein B1 (KLKB1), is a serine endopeptidase, like its homologs tissue kallikrein and kallikrein-related peptidases (KLKs). Its physiological role is to catalyze the release of kinins and other vasoactive peptides.

Basic Information

Description

Recombinant Human Plasma Kallikrein/KLKB1 Protein is produced by HEK293 cells expression system. The target protein is expressed with sequence (Gly20-Ala638) of human Plasma Kallikrein/KLKB1 (Accession #NP_000883.2) fused with 6×His tag at the C-terminus.

Bio-Activity

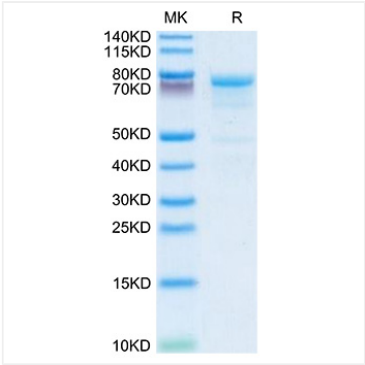
Storage

Store the lyophilized protein at -20°C to -80°C for 12 months.

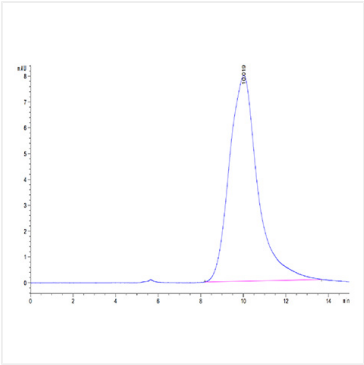
After reconstitution, the protein solution is stable at -20°C for 3 months, at 2-8°C for up to 1 week.

Avoid repeated freeze/thaw cycles.

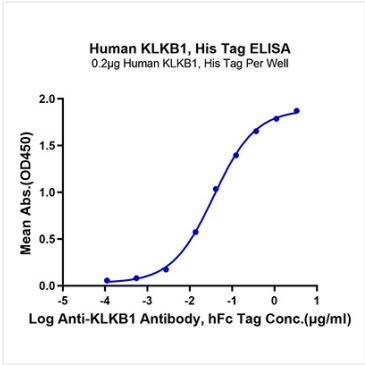
Validation Data



Recombinant Human Plasma Kallikrein/KLKB1 Protein was determined by SDS-PAGE with Coomassie Blue, showing a band at 72-80kDa.



The purity of Human Plasma Kallikrein/KLKB1 Protein (Cat.RP02872LQ) was greater than 95% as determined by SEC-HPLC.



Immobilized Human KLKB1, His Tag at 2µg/ml (100µl/well) on the plate. Dose response curve for Anti-KLKB1 Antibody, hFc Tag with the EC50 of 36.7ng/ml determined by ELISA.