

Recombinant Human Complement C3 Protein

Catalog No.: RP02855 **Recombinant**

Sequence Information

Species	Gene ID	Swiss Prot
Human	718	P01024

Tags

C-6His

Synonyms

C3; CPAMD1[Complement C3;
Complement C3 beta chain

Product Information

Source	Purification
HEK293 cells	≥ 90 % as determined by SDS-PAGE.

Calculated MW	Observed MW
188.52 kDa	45-60,64-80,110-140 kDa

Endotoxin

< 0.1 EU/μg of the protein by LAL method.

Formulation

Lyophilized from 0.22μm filtered solution in PBS (pH 7.4). Normally 5 % trehalose, 5 % mannitol are added as protectants before lyophilization. Please contact us for any concerns or special requirements.

Reconstitution

Centrifuge the vial before opening. Reconstitute to a concentration of 0.1-0.5 mg/mL in sterile distilled water. Avoid vortex or vigorously pipetting the protein. For long term storage, it is recommended to add a carrier protein or stabilizer (e.g. 0.1% BSA, 5% HSA, 10% FBS or 5% Trehalose), and aliquot the reconstituted protein solution to minimize free-thaw cycles.

Contact

 | 400-999-6126

Background

C3 is the major complement component serum. It is mainly synthesized by macrophages and liver. C3 plays a central role in the activation of the complement system. Its processing by C3 convertase is the central reaction in both classical and alternative complement pathways. It is cleaved into two fragments, C3a and C3b. C3a anaphylatoxin is a mediator of local inflammatory process. In chronic inflammation, acts as a chemoattractant for neutrophils. After activation C3b can bind covalently, via its reactive thioester, to cell surface carbohydrates or immune aggregates. It induces the contraction of smooth muscle, increases vascular permeability and causes histamine release from mast cells and basophilic leukocytes.

Basic Information

Description

Recombinant Human Complement C3 Protein is produced by HEK293 cells expression system. The target protein is expressed with sequence (Ser23-Asn1663) of Human Complement C3 (Accession #NM_000064.4) fused with His tag at the C-Terminus.

Bio-Activity

Shipping

The product is shipped at ambient temperature. Upon receipt, store it immediately at the temperature recommended below.

Storage

Store at -20°C. Store the lyophilized protein at -20°C to -80 °C up to 1 year from the date of receipt.

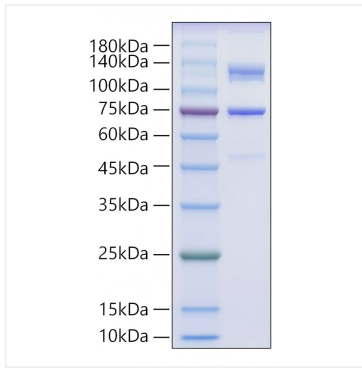
After reconstitution, the protein solution is stable at -20°C for 3 months, at 2-8°C for up to 1 week.

Avoid repeated freeze/thaw cycles.

Operational Notes

For your safety and health, please wear a lab coat and disposable gloves for handling.

Validation Data



Recombinant Human Complement C3 Protein was determined by SDS-PAGE under reducing conditions with Coomassie Blue.