

Catalog No.: RP02711 **Recombinant**

Species	Gene ID	Swiss Prot
Human	115653	O8N743

C-His&Avi

CD158Z; KIR2DS2; KIR3DL7; KIR44;
KIRC1; KIR3DL3

Source HEK293 cells	Purification ≥ 95 % as determined by Tris- Bis PAGE; ≥ 95 % as determined by HPLC.
-------------------------------	--


35.3 kDa 48-52 kDa

< 1 EU/μg of the protein by LAL method.

Centrifuge the tube before opening. Reconstitute to a concentration of 0.1-0.5 mg/mL in sterile distilled water. Avoid vortex or vigorously pipetting the protein. For long term storage, it is recommended to add a carrier protein or stabilizer (e.g. 0.1% BSA, 5% HSA, 10% FBS or 5% Trehalose), and aliquot the reconstituted protein solution to minimize free-thaw cycles.

 | 400-999-6126

 | cn.market@abclonal.com.cn

 | www.abclonal.com.cn

Killer-cell immunoglobulin-like receptor (KIR) 3DL3 is a framework gene present in all human KIR haplotypes. KIR3DL3 has been shown to be constitutively expressed at a low RNA level in peripheral blood mononuclear cell (PBMC) and decidual natural kill (NK) cells.

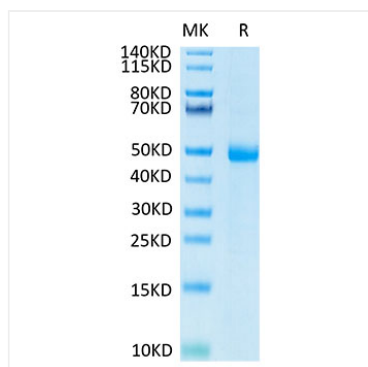
Recombinant Human KIR3DL3 Protein is expressed from Expi293 with His tag and Avi tag at the C-terminal. It contains Glu26-Leu322.

Store at -20°C. Store the lyophilized protein at -20°C to -80 °C up to 1 year from the date of receipt.

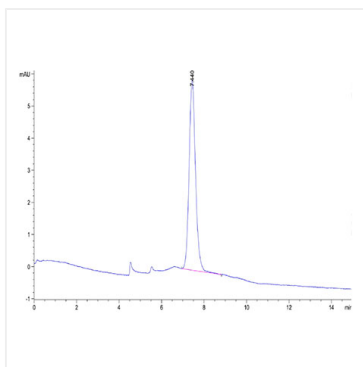
After reconstitution, the protein solution is stable at -20°C for 3 months, at 2-8°C for up to 1 week.

Avoid repeated freeze/thaw cycles.

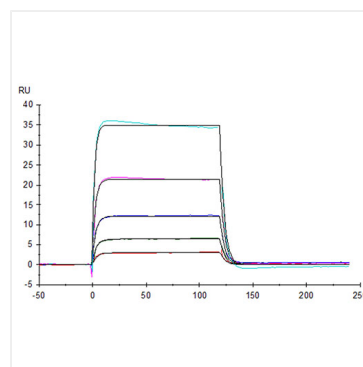
Validation Data



Recombinant Human KIR3DL3 Protein was determined by Tris-Bis PAGE under reducing conditions.



The purity of Human KIR3DL3 is greater than 95% as determined by SEC-HPLC.



Human B7-H7, hFc Tag captured on CM5 Chip via Protein A can bind Human KIR3DL3, His Tag with an affinity constant of 334 nM as determined in SPR assay (Biacore T200).