

Recombinant Mouse GFR alpha-like/GFRAL Protein

Catalog No.: RP02212 **Recombinant**

Sequence Information

Species	Gene ID	Swiss Prot
Mouse	404194	Q6SJE0

Tags

N-His

Synonyms

GFR alpha-like; GFRAL; GRAL; C6orf144; Gfral

Product Information

Source	Purification
HEK293 cells	≥ 95 % as determined by Tris-Bis PAGE. ≥ 95 % as determined by HPLC.

Calculated MW	Observed MW
40.1 kDa	48-60 kDa

Endotoxin

< 1 EU/μg of the protein by LAL method.

Formulation

Lyophilized from 0.22um filtered solution in PBS (pH 7.4). Normally 5 % trehalose is added as protectant before lyophilization.

Reconstitution

Centrifuge the tube before opening. Reconstitute to a concentration of 0.1-0.5 mg/mL in sterile distilled water. Avoid vortex or vigorously pipetting the protein. For long term storage, it is recommended to add a carrier protein or stabilizer (e.g. 0.1% BSA, 5% HSA, 10% FBS or 5% Trehalose), and aliquot the reconstituted protein solution to minimize free-thaw cycles.

Contact

☎	400-999-6126
✉	cn.market@abclonal.com.cn

Background

GFR alpha-like (GDNF receptor-alpha-like) is a distant member of the GDNFR family of proteins. Mature human GFR alpha-like is a 376 amino acid (aa) type I transmembrane protein. It contains a 333 aa extracellular domain, a 20 aa transmembrane domain and a 23 aa cytoplasmic domain. GFRAL is a brainstem-restricted receptor for GDF15 which regulates food intake, energy expenditure and body weight in response to metabolic and toxin-induced stresses

Basic Information

Description

Recombinant Mouse GFR alpha-like/GFRAL Protein is produced by mammalian expression system. The target protein is expressed with sequence (Gln20-Glu350) of Mouse GFR alpha-like/GFRAL (Accession #) fused with a His at the N-terminal.

Bio-Activity

Shipping

The product is shipped at ambient temperature. Upon receipt, store it immediately at the temperature recommended below.

Storage

Store at -20°C. Store the lyophilized protein at -20°C to -80 °C up to 1 year from the date of receipt.

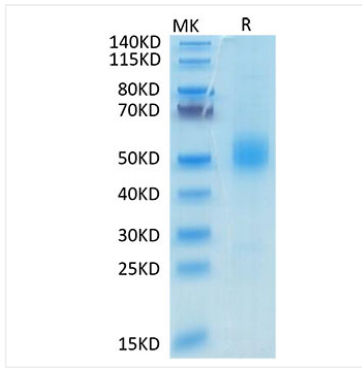
After reconstitution, the protein solution is stable at -20°C for 3 months, at 2-8°C for up to 1 week.

Avoid repeated freeze/thaw cycles.

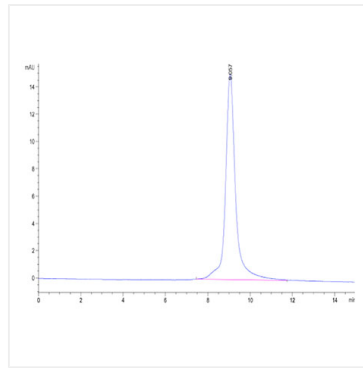
Operational Notes

For your safety and health, please wear a lab coat and disposable gloves for handling.

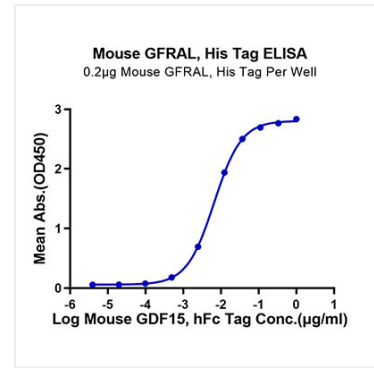
Validation Data



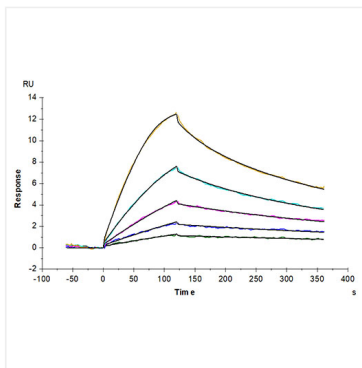
Recombinant Mouse GFR alpha-like/GFRAL Protein was determined by Tris-Bis PAGE under reducing conditions.



The purity of Mouse GFRAL is greater than 95% as determined by SEC-HPLC.



Immobilized Mouse GFRAL, His Tag at 2µg/ml (100µl/well) on the plate. Dose response curve for Mouse GDF15, hFc Tag with the EC₅₀ of 6.5ng/ml determined by ELISA.



Mouse GFRAL, His Tag immobilized on CM5 Chip can bind Mouse GDF15, His Tag with an affinity constant of 0.34 nM as determined in SPR assay (Biacore T200).