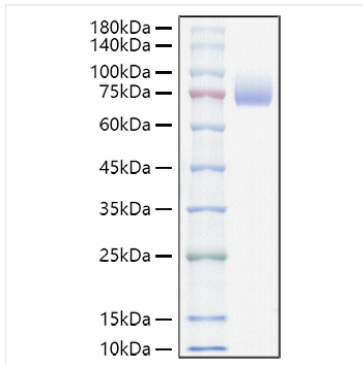
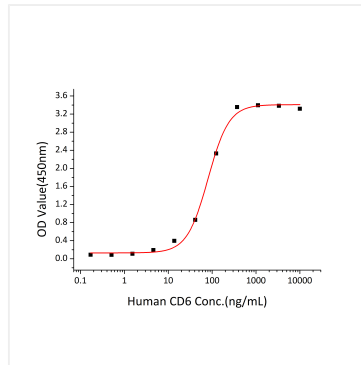


Validation Data



Recombinant Mouse ALCAM/CD166 Protein was determined by SDS-PAGE under reducing conditions with Coomassie Blue.



Immobilized Mouse CD166(Catalog: RP01574) at 10 $\mu\text{g/mL}$ (100 μL /well) can bind Human CD6 (Catalog: RP01081) with a linear range of 0.17-80.5 ng/mL.