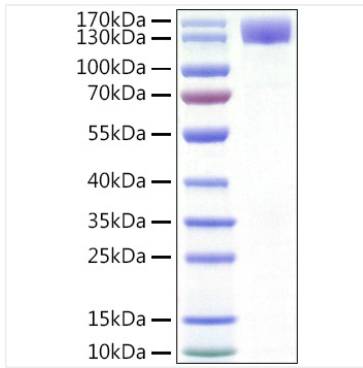


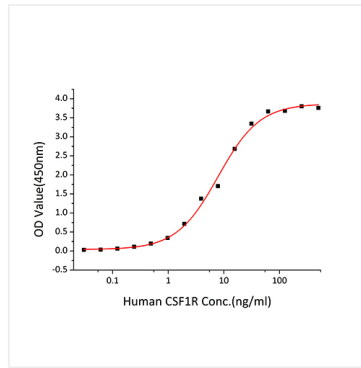


## Validation Data

---



Recombinant Human CSF1R/M-CSF R/CD115 Protein was determined by SDS-PAGE under reducing conditions with Coomassie Blue.



Immobilized Human CSF1 at 1 $\mu$ g/mL (100  $\mu$ L/well) can bind Human CSF1R with a linear range of 0.01-7.8 ng/mL.