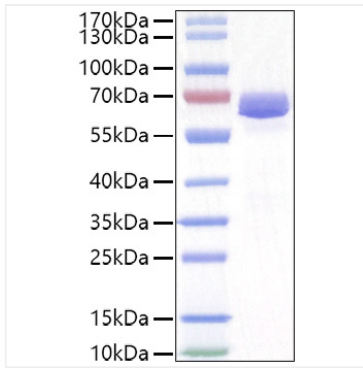
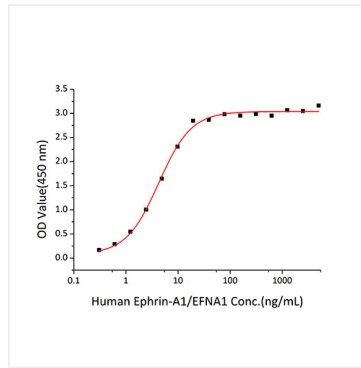


Validation Data



Recombinant Mouse EphA2/ECK Protein was determined by SDS-PAGE under reducing conditions with Coomassie Blue.



Immobilized Mouse EphA2 Protein at 2 $\mu\text{g/mL}$ (100 $\mu\text{L/well}$) can bind Human EFNA1 with a linear range of 0.3 -4.27 ng/mL.