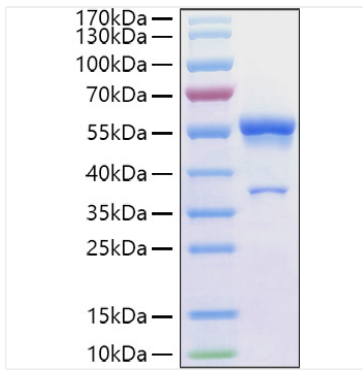
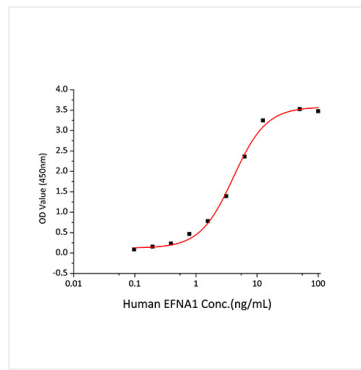


Validation Data



Recombinant Human Ephrin-A1/EFNA1 Protein was determined by SDS-PAGE under reducing conditions with Coomassie Blue.



Immobilized Human EphA2 at 1 $\mu\text{g/mL}$ (100 $\mu\text{L/well}$) can bind Human EFNA1 with a linear range of 0.098-4.084 ng/mL.