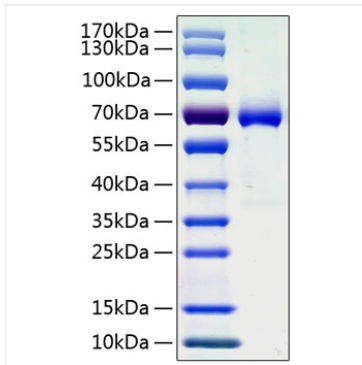
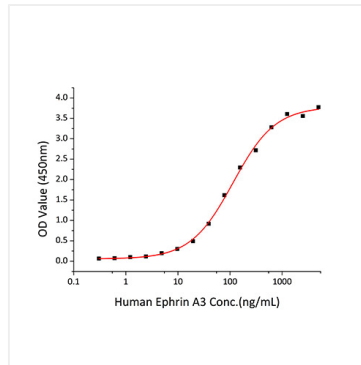


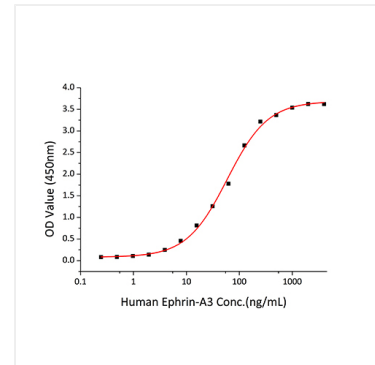
Validation Data



Recombinant Human Ephrin-A3/EFNA3 Protein was determined by SDS-PAGE under reducing conditions with Coomassie Blue.



Immobilized Mouse EPHA6 at 1 μ g/mL (100 μ L/well) can bind Human EphrinA3 with a linear range of 0.3-113.9ng/mL.



Immobilized Mouse EPHA6 at 1 μ g/mL (100 μ L/well) can bind Human EphrinA3 with a linear range of 0.3-59 ng/mL.