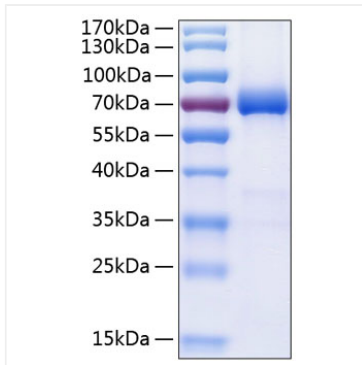
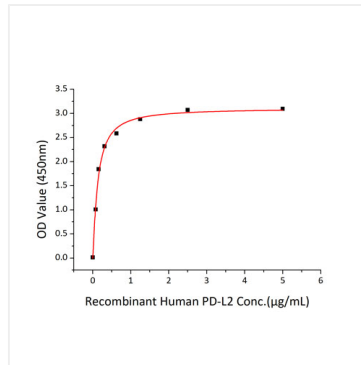


Validation Data



Recombinant Human B7-DC/PD-L2/CD273 Protein was determined by SDS-PAGE under reducing conditions with Coomassie Blue.



Immobilized Recombinant Human PD-1 at 5µg/mL (100 µL/well) can bind Recombinant Human PD-L2 with a linear range of 0.06-0.24µg/mL.