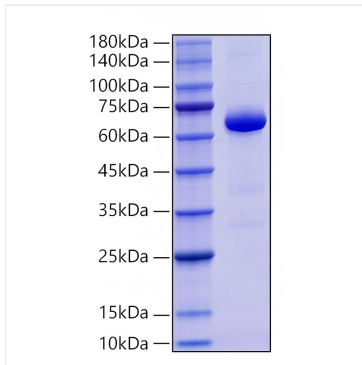
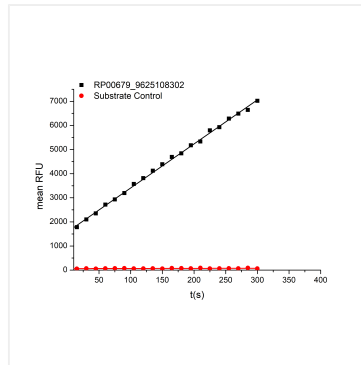


Validation Data



Recombinant Human Alkaline phosphatase (Intestinal type)/ALPI Protein was determined by SDS-PAGE under reducing conditions with Coomassie Blue.



Measured by its ability to cleave a fluorogenic substrate, 4-Methylumbelliferyl phosphate (4-MUP). The specific activity is >10412.60 pmol/min/ μ g.