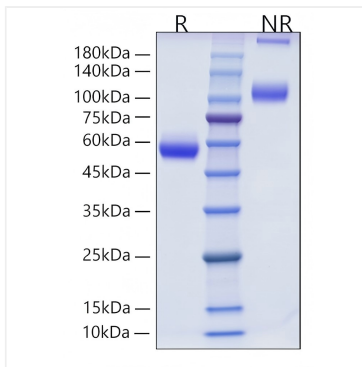
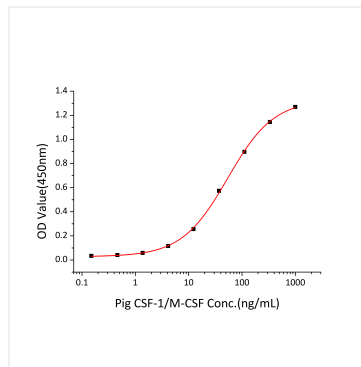


Validation Data



Recombinant Pig CSF-1/M-CSF Protein was determined by SDS-PAGE under reducing (R) and non-reducing (NR) conditions.



Measured in a cell proliferation assay using M-NFS-60 mouse myelogenous leukemia lymphoblast cells. The ED_{50} for this effect is 26.97-107.86 ng/mL, corresponding to a specific activity of 9.3×10^3 – 3.71×10^4 units/mg.