

Recombinant Human C7orf50(Cholesin) Protein

Catalog No.: RP00660 **Recombinant**

Sequence Information

Species	Gene ID	Swiss Prot
Human	84310	Q9BRJ6

Tags

C-6His

Synonyms

C7orf50; FP15621;Protein cholesin

Product Information

Source	Purification
<i>E. coli</i>	≥ 90 % as determined by SDS-PAGE; ≥ 90 % as determined by HPLC.

Calculated MW	Observed MW
22.18 kDa	25-35 kDa

Endotoxin

< 0.1 EU/μg of the protein by LAL method.

Formulation

Lyophilized from a 0.2 μm filtered solution of 1mM DTT,PBS, pH 7.4.

Reconstitution

Centrifuge the vial before opening. Reconstitute to a concentration of 0.1-0.5 mg/mL in sterile distilled water. Avoid vortex or vigorously pipetting the protein. For long term storage, it is recommended to add a carrier protein or stabilizer (e.g. 0.1% BSA, 5% HSA, 10% FBS or 5% Trehalose), and aliquot the reconstituted protein solution to minimize free-thaw cycles.

Contact

☎ | 400-999-6126

✉ | cn.market@abclonal.com.cn

Background

Hormone secreted from the intestine in response to cholesterol, where it acts to inhibit cholesterol synthesis in the liver and VLDL secretion, leading to a reduction in circulating cholesterol levels. Acts through binding to its receptor, GPR146.

Basic Information

Description

Recombinant Human C7orf50(Cholesin) Protein is produced by *E. coli* cells expression system. The target protein is expressed with sequence (Met1-Ser194) of Human C7orf50(Cholesin) (Accession #Q9BRJ6) fused with His tag at the C-terminus .

Bio-Activity

Shipping

The product is shipped at ambient temperature. Upon receipt, store it immediately at the temperature recommended below.

Storage

Store at -20°C. Store the lyophilized protein at -20°C to -80 °C up to 1 year from the date of receipt.

After reconstitution, the protein solution is stable at -20°C for 3 months, at 2-8°C for up to 1 week.

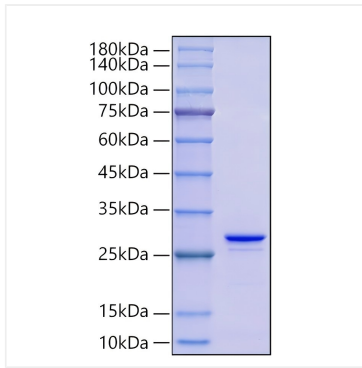
Avoid repeated freeze/thaw cycles.

Operational Notes

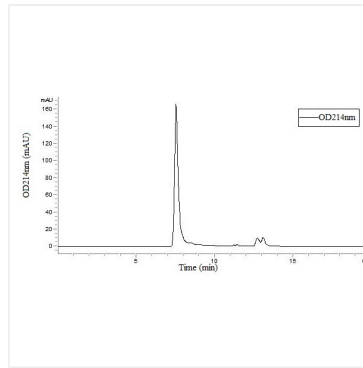
For your safety and health, please wear a lab coat and disposable gloves for handling.



Validation Data



Recombinant Human C7orf50(Cholesin)
Protein was determined by SDS-PAGE under reducing conditions with Coomassie Blue.



Recombinant Human C7orf50(Cholesin)
Protein is greater than 90% as determined by SEC-HPLC.