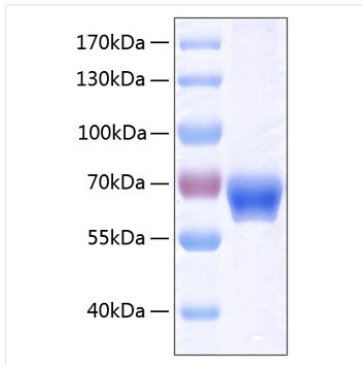
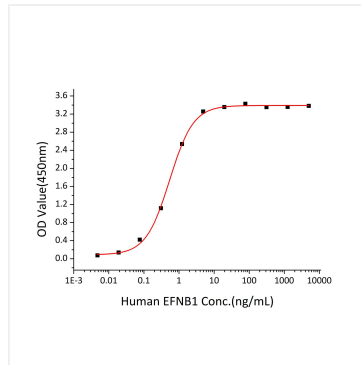


Validation Data



Recombinant Human Ephrin-B1/EFNB1 Protein was determined by SDS-PAGE under reducing conditions with Coomassie Blue.



Immobilized Mouse EphB2(Catalog: RP01156) at 2 $\mu\text{g}/\text{mL}$ (100 $\mu\text{L}/\text{well}$) can bind Human EFNB1 (Catalog: RP00250) with a linear range of 0.01-0.54 ng/mL.