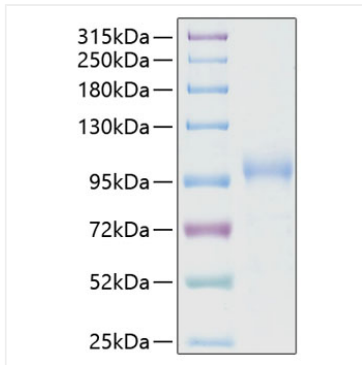
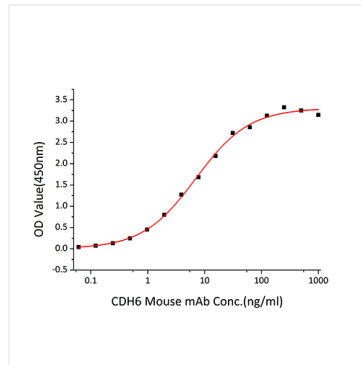


Validation Data



Recombinant Human CDH6/K-Cadherin Protein was determined by SDS-PAGE under reducing conditions with Coomassie Blue.



Immobilized Human CDH6 (Catalog: RP00244) at 1 μ g/mL (100 μ L/well) can bind CDH6 Mouse mAb with a linear range of 0.05-6.31 ng/mL.