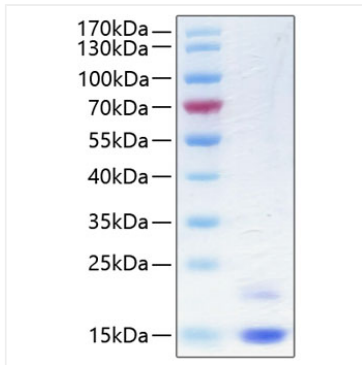
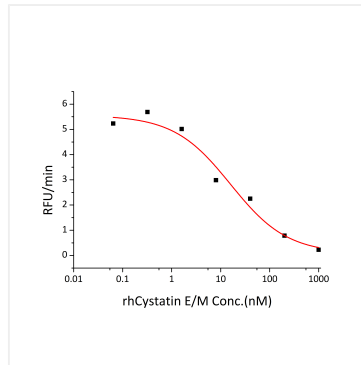


Validation Data



Recombinant Human Cystatin-M/CST6
Protein was determined by SDS-PAGE under reducing conditions with Coomassie Blue.



Recombinant Human CST6 inhibits papain cleavage of a fluorogenic peptide substrate Z-FR-AMC (Catalog # ES009). The IC₅₀ value is approximately 16nM.