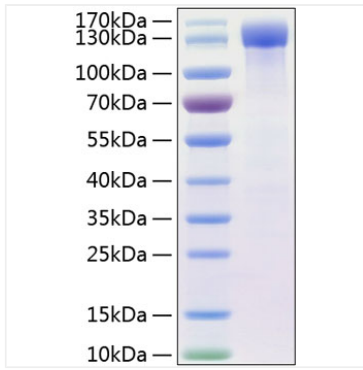
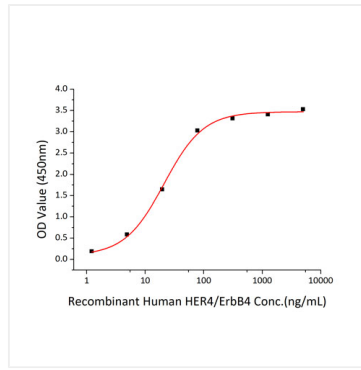




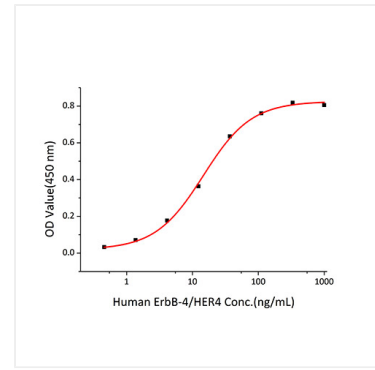
## Validation Data



Recombinant Human ErbB-4/HER4 Protein was determined by SDS-PAGE under reducing conditions with Coomassie Blue.



Immobilized Recombinant Human NRG1-beta1 at 2 $\mu$ g/mL (100  $\mu$ L/well) can bind Recombinant Human HER4/ErbB4, the EC<sub>50</sub> of HER4/ErbB4 is 20.99ng/mL.



Immobilized Human ErbB4/Her4 Antibody at 1 $\mu$ g/mL (25  $\mu$ L/well) can bind Human ErbB4/Her4 with a linear range of 0.46-14.6 ng/mL.