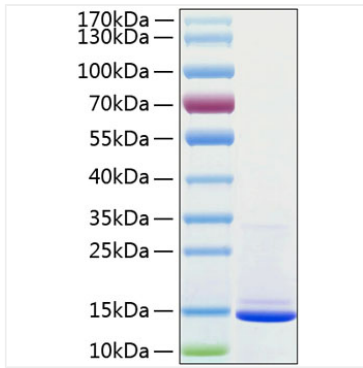
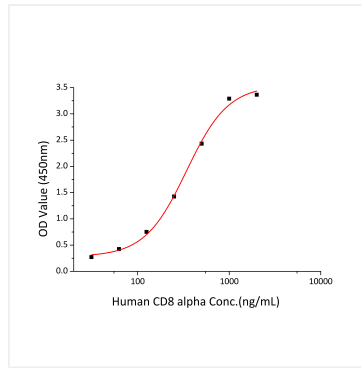


Validation Data



Recombinant Human Beta-2-microglobulin/B2M Protein was determined by SDS-PAGE under reducing conditions with Coomassie Blue.



Immobilized Recombinant Human B2M at 2 μ g/mL (100 μ L/well) can bind Recombinant Human CD8 alpha with a linear range of 31.25-341 ng/mL.