

Rabbit Anti-Human IFN-alpha mAb

Catalog No.: RMK0519

Basic Information

Catalog No.
RMK0519

Catagory
Elisa Antibody Kit

Application
ELISA,CLIA

Product Information

Ig Type
Rabbit IgG


Purification
Affinity purification


Endotoxin Level

Storage
Store at -20°C.
Avoid repeated freeze-thaw cycles.

Formulation
Supplied as a 0.2µm filtered solution in PBS with 0.05% Proclin300, PH 7.4.

Contact

 | order@abclonal.com

 | support@abclonal.com

 | www.abclonal.com

Background

This gene is a member of the alpha interferon gene cluster on chromosome 9. The encoded cytokine is a member of the type I interferon family that is produced in response to viral infection as a key part of the innate immune response with potent antiviral, antiproliferative and immunomodulatory properties. This cytokine, like other type I interferons, binds a plasma membrane receptor made of IFNAR1 and IFNAR2 that is ubiquitously expressed, and thus is able to act on virtually all body cells. The encoded protein is effective in reducing the symptoms and duration of the common cold and in treating many types of cancer, including some hematological malignancies and solid tumors. A deficiency of type I interferon in the blood is thought to be a hallmark of severe COVID-19 and may provide a rationale for a combined therapeutic approach.

Immunogen Information

Immunogen
Recombinant Human IFN-alpha protein

Cross-Reactivity

/

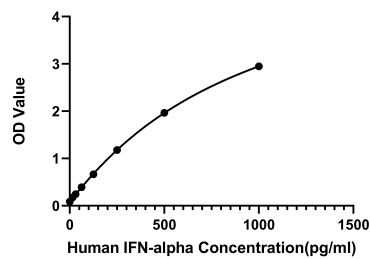
Assay Applications

Human IFN-alpha Sandwich Immunoassay

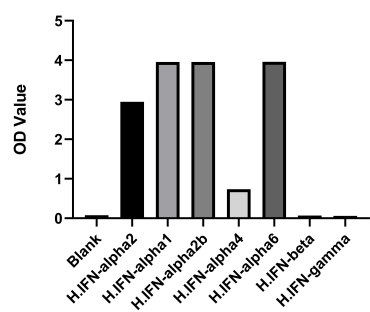
		Recommended Concentration	Sample
ELISA	Capture	1-4ug/mL	Rabbit anti-Human IFN-alpha mAb(Cat. No.RMK0518)
	Detection	0.033-0.133ug/mL	Rabbit anti-Human IFN-alpha mAb(Cat. No.RMK0519)
	Standard	0.033-0.133ug/mL	Recombinant Human IFN-alpha Protein

CLIA	Capture	1-4ug/mL	Rabbit anti-Human IFN-alpha mAb(Cat. No.RMK0518)
	Detection	0.5-2ug/mL	Rabbit anti-Human IFN-alpha mAb(Cat. No.RMK0519)
	Standard	2.5-2000pg/mL	Recombinant Human IFN-alpha Protein

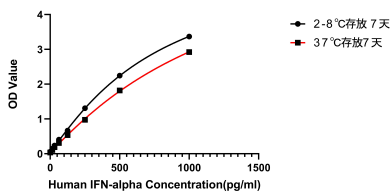
Validation Data



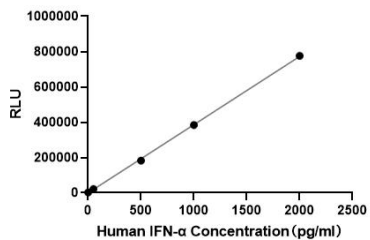
This standard curve is only for demonstration purposes. A standard curve should be generated for each assay.



Recognizes the natural and recombinant human IFN- α subtypes listed below: IFN-alpha 2, IFN-alpha 1, IFN-alpha 2b, IFN-alpha 4, IFN-alpha 6. No significant cross-reactivity or interference with IFN beta or IFN gamma.



Placed at 37°C for 7 days, the stability of the standard curve all conform to CV <10%.



This standard curve is only for demonstration purposes. A standard curve should be generated for each assay.