

Rabbit anti-Human IL-4 mAb

Catalog No.: RMK0465

Basic Information

Catalog No.
RMK0465

Catagory
Elisa Antibody Kit

Application
ELISA

Product Information

Ig Type
Rabbit IgG

Purification
Affinity purification

Endotoxin Level
/

Storage
Store at -20°C
Avoid repeated freeze-thaw cycles.

Formulation
Supplied as a 0.2 µm filtered solution in PBS with 0.05% Proclin 300, pH 7.4.

Contact

 | order@abclonal.com

 | support@abclonal.com

 | www.abclonal.com

Background

The protein encoded by this gene is a pleiotropic cytokine produced by activated T cells. This cytokine is a ligand for interleukin 4 receptor. The interleukin 4 receptor also binds to IL13, which may contribute to many overlapping functions of this cytokine and IL13. STAT6, a signal transducer and activator of transcription, has been shown to play a central role in mediating the immune regulatory signal of this cytokine. This gene, IL3, IL5, IL13, and CSF2 form a cytokine gene cluster on chromosome 5q, with this gene particularly close to IL13. This gene, IL13 and IL5 are found to be regulated coordinately by several long-range regulatory elements in an over 120 kilobase range on the chromosome. IL4 is considered an important cytokine for tissue repair, counterbalancing the effects of proinflammatory type 1 cytokines, however, it also promotes allergic airway inflammation. Moreover, IL-4, a type 2 cytokine, mediates and regulates a variety of human host responses such as allergic, anti-parasitic, wound healing, and acute inflammation...

Immunogen Information

Immunogen
Recombinant Human IL-4 protein

Cross-Reactivity

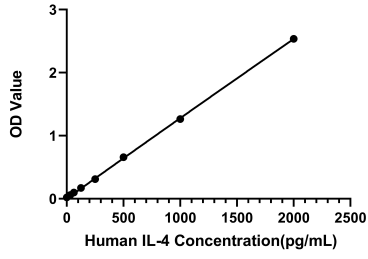
/

Assay Applications

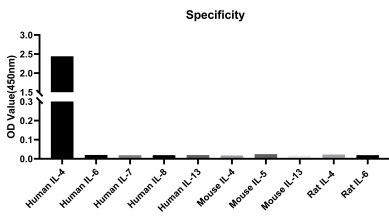
Human IL-4 Sandwich Immunoassay

		Recommended Concentration	Sample
ELISA	Capture	1-4 µg/mL	Rabbit anti-Human IL-4 mAb (Cat. No. RMK0464)
	Detection	0.01-0.04 µg/mL	Rabbit anti-Human IL-4 mAb (Cat. No. RMK0465)
	Standard	31.25-2000 pg/mL	Recombinant Human IL-4 Protein (Cat. No. RP00995)

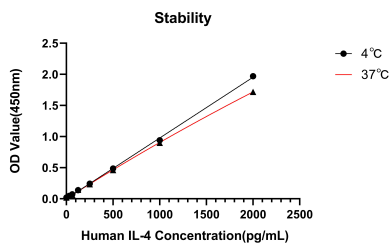
Validation Data



This standard curve is only for demonstration purposes. A standard curve should be generated for each assay.



No significant cross-reactivity or interference was observed.



Placed at 37°C for 7 days, the stability of the standard curve all conform to CV <10%.