

# Rabbit anti-Human IL-12/IL-23 p40 mAb

**Catalog No.:** RM17932

## Basic Information

**Catalog No.**  
RM17932

**Catagory**  
Elisa Antibody Kit

**Application**  
ELISA

## Product Information

**Ig Type**  
Rabbit IgG

**Purification**  
Affinity purification

**Endotoxin Level**  
N/A

**Storage**  
Store at -20°C.  
**Avoid repeated freeze-thaw cycles.**

**Formulation**  
Supplied as a 0.2 µm filtered solution in PBS with 0.05% Proclin 300, pH 7.3.

## Contact

 | order@abclonal.com

 | support@abclonal.com

 | www.abclonal.com

## Background

This gene encodes a subunit of interleukin 12, a cytokine that acts on T and natural killer cells, and has a broad array of biological activities. Interleukin 12 is a disulfide-linked heterodimer composed of the 40 kD cytokine receptor like subunit encoded by this gene, and a 35 kD subunit encoded by IL12A. This cytokine is expressed by activated macrophages that serve as an essential inducer of Th1 cells development. This cytokine has been found to be important for sustaining a sufficient number of memory/effector Th1 cells to mediate long-term protection to an intracellular pathogen. Overexpression of this gene was observed in the central nervous system of patients with multiple sclerosis (MS), suggesting a role of this cytokine in the pathogenesis of the disease. The promoter polymorphism of this gene has been reported to be associated with the severity of atopic and non-atopic asthma in children.

## Immunogen Information

**Immunogen**  
Recombinant Human IL-12/IL-23 p40 Protein

## Cross-Reactivity

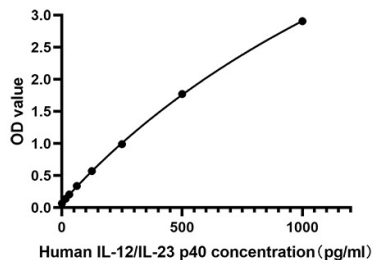
No cross-reactivity in ELISA with recombinant Mouse IFN-γ□Mouse IFN-β□Mouse IL-20□Mouse IL-22□Mouse IL-24□Human IL-10  
Has cross-reactivity in ELISA with Rat IL-10

## Assay Applications

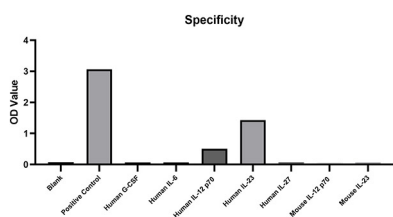
Human IL-12/IL-23 p40 Sandwich Immunoassay

		Recommended Concentration	Sample
ELISA	Capture	1-4 µg/mL	Rabbit anti-Human IL-12/IL-23 p40 mAb (Cat. No. RM17931)
	Detection	0.05-0.2 µg/mL	Rabbit anti-Human IL-12/IL-23 p40 mAb (Cat. No. RM17932)
	Standard	15.62-1000 pg/mL	Recombinant Human IL-12/IL-23 p40 Protein

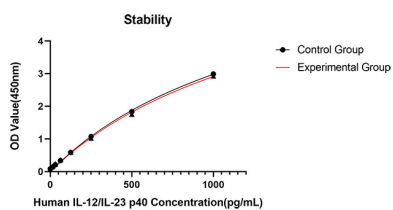
## Validation Data



This standard curve is only for demonstration purposes. A standard curve should be generated for each assay.



No significant cross-reactivity or interference was observed.



Placed at 37°C for 3 days, the stability of the standard curve all conform to CV <10%.