

# Rabbit anti-Human CCL2/MCP-1 mAb

Catalog No.: RM17903

## Basic Information

**Catalog No.**  
RM17903

**Catagory**  
Elisa Antibody Kit

**Application**  
ELISA

## Product Information

**Ig Type**  
Rabbit IgG


**Purification**  
Affinity purification


**Endotoxin Level**

**Storage**  
Store at -20°C.  
**Avoid repeated freeze-thaw cycles.**

**Formulation**  
Supplied as a 0.2um filtered solution in PBS with 0.05%ProClin 300,PH 7.4.

## Contact

 | order@abclonal.com

 | support@abclonal.com

 | www.abclonal.com

## Background

This gene is one of several cytokine genes clustered on the q-arm of chromosome 17. Chemokines are a superfamily of secreted proteins involved in immunoregulatory and inflammatory processes. The superfamily is divided into four subfamilies based on the arrangement of N-terminal cysteine residues of the mature peptide. This chemokine is a member of the CC subfamily which is characterized by two adjacent cysteine residues. This cytokine displays chemotactic activity for monocytes and basophils but not for neutrophils or eosinophils. It has been implicated in the pathogenesis of diseases characterized by monocytic infiltrates, like psoriasis, rheumatoid arthritis and atherosclerosis. It binds to chemokine receptors CCR2 and CCR4. Elevated expression of the encoded protein is associated with severe acute respiratory syndrome coronavirus 2 (SARS&#8208;CoV&#8208;2) infection.

## Immunogen Information

**Immunogen**  
Recombinant fusion protein containing a sequence corresponding to amino acids 22-99 of human CCL2/MCP-1 (NP\_002973.1).

## Cross-Reactivity

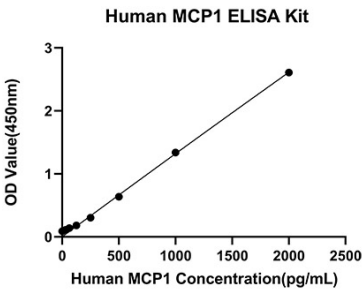
No cross-reactivity in ELISA with recombinant Human IL-3 ,Human IL-4,Human IL-5,Human IL-6,Human IL-8,Human IL-10,Human IL-12,Human IFN-α

## Assay Applications

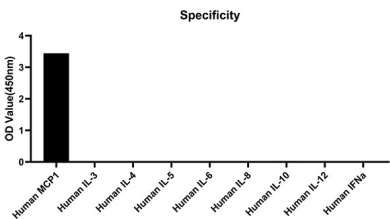
Human CCL2/MCP-1 Sandwich Immunoassay

		Recommended Concentration	Sample
ELISA	Capture	0.5-2ug/mL	Rabbit anti-Human CCL2/MCP-1 mAb(Cat. No.RM17902)
	Detection	0.0025-0.01ug/mL	Rabbit anti-Human CCL2/MCP-1 mAb(Cat. No.RM17903)
	Standard	31.25-2000pg/mL	Recombinant Human CCL2/MCP-1 Protein

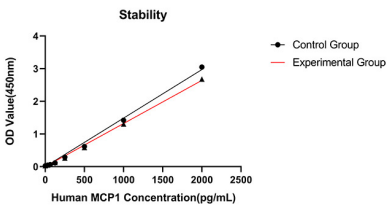
Validation Data



This standard curve is only for demonstration purposes. A standard curve should be generated for each assay.



No significant cross-reactivity or interference was observed.



Placed at 37°C for 3 days, the stability of the standard curve all conform to CV <10%.