

Rabbit anti-Mouse IL-4 mAb (CAP)

Catalog No.: RM17870

Basic Information

Catalog No.
RM17870

Catagory
Elisa Antibody Kit

Application
ELISA

Product Information

Ig Type
Rabbit IgG

Purification
Affinity purification

Endotoxin Level

Storage
Store at -20°C.
Avoid repeated freeze-thaw cycles.

Formulation
Supplied as a 0.2 µm filtered solution in PBS with 0.05% Proclin 300, PH 7.4.

Contact

 | order@abclonal.com

 | support@abclonal.com

 | www.abclonal.com

Background

Enables cytokine activity. Involved in several processes, including innate immune response in mucosa; negative regulation of white fat cell proliferation; and regulation of gene expression. Acts upstream of or within several processes, including T-helper cell differentiation; positive regulation of macromolecule metabolic process; and regulation of leukocyte activation. Located in external side of plasma membrane and extracellular space. Is expressed in several structures, including brain; colon; hemolymphoid system; liver; and placenta. Used to study Sjogren's syndrome; atopic dermatitis; and type 1 diabetes mellitus. Human ortholog(s) of this gene implicated in several diseases, including asthma (multiple); autoimmune disease (multiple); hepatitis B; hepatitis C; and pancreatic cancer (multiple). Orthologous to human IL4 (interleukin 4).

Immunogen Information

Immunogen
Recombinant mouse IL-4 protein

Cross-Reactivity

No cross-reactivity in ELISA assay with recombinant Mouse GM-CSF, Mouse G-CSF, Mouse IFN-gamma, Mouse IFN-beta, Mouse IL-1 beta, Mouse IL-2, Mouse IL-6, Mouse IL-10, Mouse IL-5, Mouse IL-9, Mouse CXCL1/KC, Mouse TNF-alpha, Human IL-4, Rat IL-4

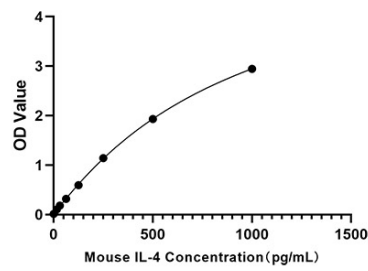
Assay Applications

Mouse IL-4 Sandwich ELISA Immunoassay

	Recommended Concentration	Sample
ELISA Capture	1-4 µg/mL	Rabbit anti-Mouse IL-4 (CAP)(Cat. No. RM17870)
ELISA Detection	0.007-0.028 µg/mL	Rabbit anti-Mouse IL-4 (DET)(Cat. No. RM17871)
Standard	15.6-1000 pg/mL	Recombinant Mouse IL-4 Protein (Cat. No. RP01161)

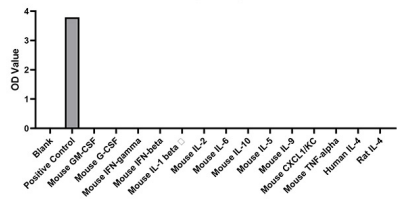
Validation Data

Mouse IL-4 ELISA Kit



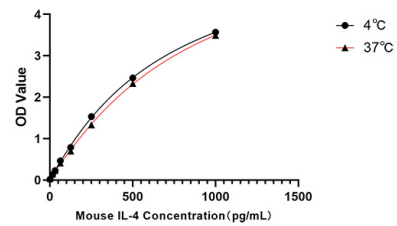
This standard curve is only for demonstration purposes. A standard curve should be generated for each assay.

Specificity



From the comparison of the standard curve, it is found that ABclonal has high sensitivity.

Stability



Placed at 37°C for 3 days, the stability of the standard curve all conform to CV <10%.