

Rabbit anti-Mouse IL-1 alpha mAb (CAP)

Catalog No.: RM17853

Basic Information

Catalog No.
RM17853

Catagory
Elisa Antibody Kit

Application
ELISA

Product Information

Ig Type
Rabbit IgG

Purification
Affinity purification

Endotoxin Level
/

Storage
Store at -20°C.
Avoid repeated freeze-thaw cycles.

Formulation
Supplied as a 0.2 µm filtered solution in PBS with 0.05% Proclin 300, pH 7.4.

Contact

 | order@abclonal.com

 | support@abclonal.com

 | www.abclonal.com

Background

Enables cytokine activity and interleukin-1 receptor binding activity. Involved in positive regulation of angiogenesis and positive regulation of vascular endothelial growth factor production. Acts upstream of or within several processes, including cell surface receptor signaling pathway; connective tissue replacement involved in inflammatory response wound healing; and positive regulation of cytokine production. Located in cytoplasm and extracellular space. Is expressed in several structures, including alimentary system; brain; hemolymphoid system gland; reproductive system; and respiratory system. Human ortholog(s) of this gene implicated in several diseases, including Fabry disease; Schnitzler syndrome; autoimmune disease (multiple); hematologic cancer (multiple); and lung disease (multiple). Orthologous to human IL1A (interleukin 1 alpha).

Immunogen Information

Immunogen
Recombinant Mouse IL-1 alpha Protein

Cross-Reactivity

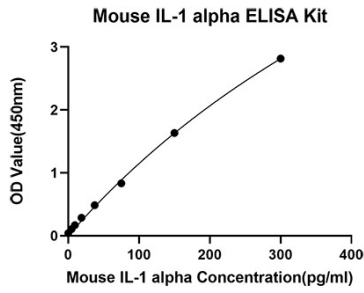
No cross-reactivity in immunoassay with recombinant Human IL-1 alpha, Rat IL-1 beta, Mouse G-CSF, Mouse IL-4, Mouse IL-5, Mouse IL-6, Mouse IL-9, Mouse IL-10, Mouse IL-13, Mouse CXCL1, Mouse Leptin, Mouse TNF-alpha

Assay Applications

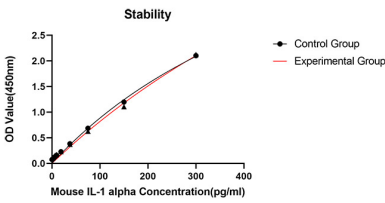
Mouse IL-1 alpha Sandwich Immunoassay

	Recommended Concentration	Sample
ELISA Capture	1-4 µg/mL	Rabbit anti-Mouse IL-1 alpha mAb (Cat. No. RM17853)
ELISA Detection	0.03-0.12 µg/mL	Rabbit anti-Mouse IL-1 alpha mAb (Cat. No. RM17854)
Standard	4.68-300 pg/mL	Recombinant Mouse IL-1 alpha Protein (Cat. No. RP01319)

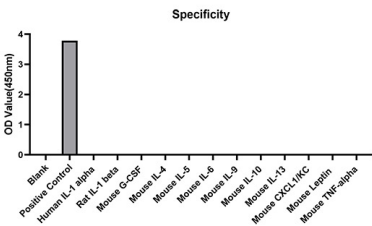
Validation Data



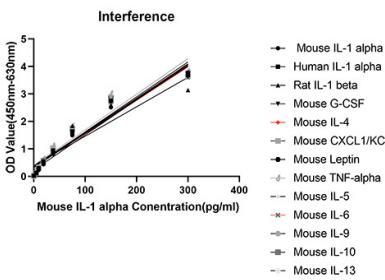
This standard curve is only for demonstration purposes. A standard curve should be generated for each assay.



From the comparison of the standard curve, it is found that ABclonal has high sensitivity.



No significant cross-reactivity or interference was observed.



Placed at 37°C for 3 days, the stability of the standard curve all conform to CV <10%.