

Rabbit anti-Human PGI₂ mAb (DET)

Catalog No.: RM17838

Basic Information

Catalog No.
RM17838

Catagory
Elisa Antibody Kit

Application
ELISA

Product Information

Ig Type
Rabbit IgG

Purification
Affinity purification

Endotoxin Level

Storage
Store at -20°C. Avoid freeze / thaw cycles. Preservative 0.05%ProClin 300.
Avoid repeated freeze-thaw cycles.

Formulation
Supplied as a 0.2um filtered solution in PBS with 0.05%ProClin 300,PH 7.4.

Contact

 | order@abclonal.com

 | support@abclonal.com

 | www.abclonal.com

Background

This gene encodes an aspartic proteinase that belongs to the peptidase family A1. The encoded protein is a digestive enzyme that is produced in the stomach and constitutes a major component of the gastric mucosa. This protein is also secreted into the serum. This protein is synthesized as an inactive zymogen that includes a highly basic prosegment. This enzyme is converted into its active mature form at low pH by sequential cleavage of the prosegment that is carried out by the enzyme itself. Polymorphisms in this gene are associated with susceptibility to gastric cancers. Serum levels of this enzyme are used as a biomarker for certain gastric diseases including Helicobacter pylori related gastritis. Alternate splicing results in multiple transcript variants. A pseudogene of this gene is found on chromosome 1.

Immunogen Information

Immunogen
Recombinant Human PGI₂

Cross-Reactivity

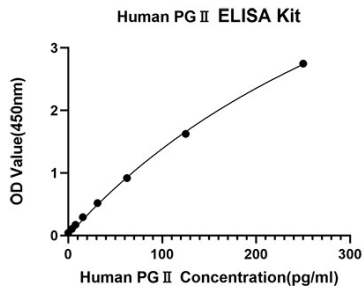
/

Assay Applications

Human PGI₂ Sandwich ELISA Immunoassay

	Recommended Concentration	Sample
ELISA Capture	0.5-4ug/mL	Rabbit anti-Human PGI ₂ (CAP)(Cat. No.RM17837)
ELISA Detection	0.02-0.08ug/mL	Rabbit anti-Human PGI ₂ (DET)(Cat. No.RM17838)
Standard	3.9-250pg/mL	Recombinant Human PGI ₂ Protein

Validation Data



This standard curve is only for demonstration purposes. A standard curve should be generated for each assay.