

# Goat Anti-Mouse IgG (H+L)

Catalog No.: AS071 **13 Publications**

## Basic Information

### Observed MW

25kDa(Light chain),55kDa(Heavy chain)//25kDa(Light chain),55kDa(Heavy chain)

### Calculated MW

### Category

Secondary antibody

### Applications

WB,ELISA,CUT&Tag

### Cross-Reactivity

## Background

Secondary antibodies are affinity-purified antibodies which will work with target-specific primary antibody in the detection, sorting or purification of its specified target. Secondary antibodies offer increased versatility enabling users to use many detection systems (e.g. HRP, AP, fluorescence). They can also provide greater sensitivity through signal amplification as multiple secondary antibodies. Most commonly, secondary antibodies are generated by immunizing the host animal (different from host species of primary antibody) with a pooled population of normal immunoglobulins from the host species of primary antibody and can be further purified and modified (i.e. antibody fragmentation, label conjugation, etc.) to ensure well-characterized specificity to corresponding normal immunoglobulins.

## Recommended Dilutions

**WB** 1:1000 - 1:5000

**ELISA** Recommended starting concentration is 1 µg/mL. Please optimize the concentration based on your specific assay requirements.

**CUT&Tag** 1:100

## Immunogen Information

### Gene ID

### Swiss Prot

### Immunogen

This information is considered to be commercially sensitive.

### Synonyms

## Contact

☎ | 400-999-6126

✉ | [cn.market@abclonal.com.cn](mailto:cn.market@abclonal.com.cn)

🌐 | [www.abclonal.com.cn](http://www.abclonal.com.cn)

## Product Information

### Source

Goat

### Isotype

IgG

### Purification

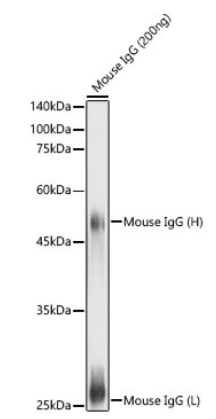
Affinity purification

### Storage

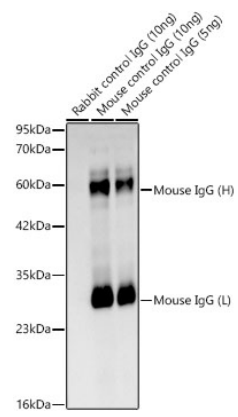
Store at -20°C. Avoid freeze / thaw cycles.

Buffer: PBS with 0.05% proclin300,50% glycerol,pH7.3.

# Validation Data



Western blot analysis of lysates from Mouse IgG using Goat Anti-Mouse IgG (H+L) (AS071) at 1:1000 dilution.  
Lysates/proteins: 200ng per lane.  
Blocking buffer: 3% nonfat dry milk in TBST.  
Detection: ECL Basic Kit (RM00020).  
Exposure time: 1s.



Western blot analysis of recombinant Mouse and Rat control IgG Protein using Goat Anti-Mouse IgG (H+L) (AS071) at 1:1000 dilution.  
Secondary antibody:HRP Donkey Anti-Goat IgG (H+L)(AS031) at 1:5000 dilution.  
Lysates/proteins: 10 ng/5ng per lane.  
Blocking buffer: 3% nonfat dry milk in TBST.  
Detection: ECL Basic Kit (RM00020).  
Exposure time: 45s.