

Phospho-ULK1-S555 Rabbit mAb

Catalog No.: AP1495

Recombinant

1 Publications

Basic Information

Observed MW

140-150KD

Calculated MW

113kDa

Category

Primary antibody

Applications

WB,IF/ICC,ELISA

Cross-Reactivity

Human, Mouse

CloneNo number

ARC63423

Background

Enables identical protein binding activity; protein serine/threonine kinase activity; and small GTPase binding activity. Involved in several processes, including autophagosome assembly; positive regulation by symbiont of host autophagy; and protein phosphorylation. Located in autophagosome; cytosol; and phagophore assembly site membrane. Is extrinsic component of autophagosome membrane; extrinsic component of omegasome membrane; and extrinsic component of phagophore assembly site membrane. Part of Atg1/ULK1 kinase complex.

Recommended Dilutions

WB 1:2000 - 1:9000

IF/ICC 1:50 - 1:200

ELISA Recommended starting concentration is 1 µg/mL. Please optimize the concentration based on your specific assay requirements.

Immunogen Information

Gene ID

8408

Swiss Prot

O75385

Immunogen

Synthetic peptide. This information is considered to be commercially sensitive.

Synonyms

ATG1; ATG1A; UNC51; hATG1; Unc51.1

Contact

☎ | 400-999-6126

✉ | cn.market@abclonal.com.cn

🌐 | www.abclonal.com.cn

Product Information

Source

Rabbit

Isotype

IgG

Purification

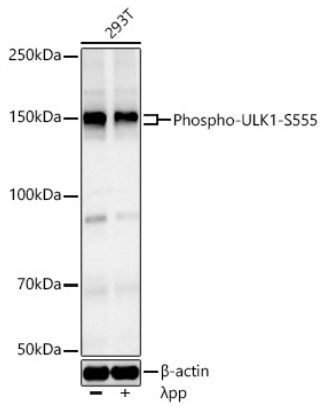
Affinity purification

Storage

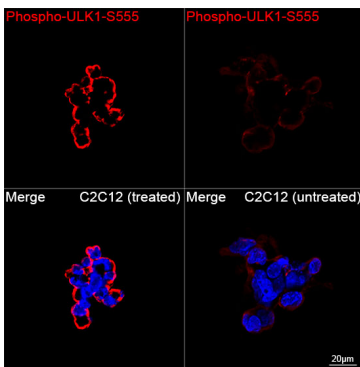
Store at -20°C. Avoid freeze / thaw cycles.

Buffer: PBS containing 50% glycerol and 0.05% BSA, preserved with proclin300 or sodium azide (as specified on the Certificate of Analysis), pH 7.3.

Validation Data



Western blot analysis of lysates from 293T cells using Phospho-ULK1-S555 Rabbit mAb (AP1495) at 1:8000 dilution incubated overnight at 4°C. 293T cells were treated by λ -PP mixed solution (62.5U) at 30°C for 1 hours.
Secondary antibody: HRP-conjugated Goat anti-Rabbit IgG (H+L) (AS014) at 1:10000 dilution.
Lysates/proteins: 30 μ g per lane.
Blocking buffer: 3% nonfat dry milk in TBST.
Detection: ECL Basic Kit (RM00020).
Exposure time: 45s.



Confocal imaging of C2C12 cells (treated with CA) and C2C12 cells (untreated) using Phospho-ULK1-S555 Rabbit mAb (AP1495, dilution 1:200) followed by a further incubation with Cy3 Goat Anti-Rabbit IgG (H+L) (AS007, dilution 1:500) (Red). DAPI was used for nuclear staining (Blue). Objective: 100x.