

Phospho-CGAS-S420 Rabbit pAb

Catalog No.: AP1228 **3 Publications**

Basic Information

Observed MW

62kDa

Calculated MW

58kDa

Category

Primary antibody

Applications

WB, ELISA

Cross-Reactivity

Human, Rat

Background

The protein encoded by this gene is a DNA binding cytosolic protein that catalyzes the synthesis of cyclic guanosine monophosphate-adenosine monophosphate (cGAMP) after sensing the presence of DNA in the cytoplasm. cGAMP binds another protein, Stimulator of interferon genes (STING), leading to the induction of interferons, and a host immune response. Reduced expression of this gene inhibits interferon induction in the presence of some viral infections. Alternative splicing results in multiple transcript variants.

Recommended Dilutions

WB 1:500 - 1:1000

ELISA Recommended starting concentration is 1 µg/mL. Please optimize the concentration based on your specific assay requirements.

Immunogen Information

Gene ID

214763

Swiss Prot

Q8C6L5

Immunogen

Synthetic peptide. This information is considered to be commercially sensitive.

Synonyms

Mb21d1; E330016A19Rik; Phospho-CGAS-S420

Contact

☎ | 400-999-6126

✉ | cn.market@abclonal.com.cn

🌐 | www.abclonal.com.cn

Product Information

Source

Rabbit

Isotype

IgG

Purification

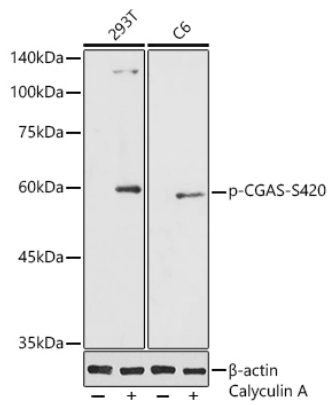
Affinity purification

Storage

Store at -20°C. Avoid freeze / thaw cycles.

Buffer: PBS containing 50% glycerol, preserved with proclin300 or sodium azide (as specified on the Certificate of Analysis), pH 7.3.

Validation Data



Western blot analysis of various lysates using Phospho-CGAS-S420 Rabbit pAb (AP1228) at 1:1000 dilution. 293T and C6 cells were treated with Calyculin A (100 nM) at 37°C for 30 minutes after serum-starvation overnight. Secondary antibody: HRP-conjugated Goat anti-Rabbit IgG (H+L) (AS014) at 1:10000 dilution. Lysates/proteins: 25µg per lane. Blocking buffer: 3% nonfat dry milk in TBST. Detection: ECL Basic Kit (RM00020). Exposure time: 90s.