

# Phospho-p53-S367 Rabbit pAb

Catalog No.: AP1170

## Basic Information

### Observed MW

53kDa

### Calculated MW

44kDa

### Category

Primary antibody

### Applications

WB, ELISA

### Cross-Reactivity

Human

## Background

This gene encodes a tumor suppressor protein containing transcriptional activation, DNA binding, and oligomerization domains. The encoded protein responds to diverse cellular stresses to regulate expression of target genes, thereby inducing cell cycle arrest, apoptosis, senescence, DNA repair, or changes in metabolism. Mutations in this gene are associated with a variety of human cancers, including hereditary cancers such as Li-Fraumeni syndrome. Alternative splicing of this gene and the use of alternate promoters result in multiple transcript variants and isoforms. Additional isoforms have also been shown to result from the use of alternate translation initiation codons from identical transcript variants (PMIDs: 12032546, 20937277).

## Recommended Dilutions

**WB** 1:100 - 1:500

**ELISA** Recommended starting concentration is 1 µg/mL. Please optimize the concentration based on your specific assay requirements.

## Immunogen Information

### Gene ID

7157

### Swiss Prot

P04637

### Immunogen

Synthetic peptide. This information is considered to be commercially sensitive.

### Synonyms

P53; BCC7; LFS1; BMFS5; TRP53; Phospho-p53-S367

## Contact

☎ | 400-999-6126

✉ | [cn.market@abclonal.com.cn](mailto:cn.market@abclonal.com.cn)

🌐 | [www.abclonal.com.cn](http://www.abclonal.com.cn)

## Product Information

### Source

Rabbit

### Isotype

IgG

### Purification

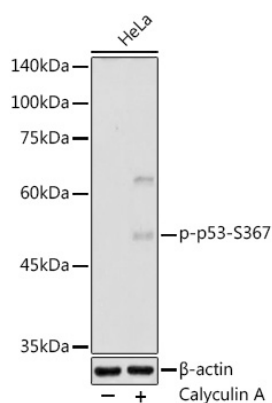
Affinity purification

### Storage

Store at -20°C. Avoid freeze / thaw cycles.

Buffer: PBS with 0.01% thimerosal, 50% glycerol, pH7.3.

## Validation Data



Western blot analysis of lysates from HeLa cells, using Phospho-p53-S367 Rabbit pAb (AP1170) at 1:500 dilution. HeLa cells were treated with Calyculin A (100 nM) at 37°C for 30 minutes after serum-starvation overnight.

Secondary antibody: HRP-conjugated Goat anti-Rabbit IgG (H+L) (AS014) at 1:10000 dilution.

Lysates/proteins: 25µg per lane.

Blocking buffer: 3% nonfat dry milk in TBST.

Detection: ECL Enhanced Kit (RM00021).

Exposure time: 180s.