

Phospho-PKR/EIF2AK2-T446 Rabbit mAb

Catalog No.: AP1134 **Recombinant** **10 Publications**

Basic Information

Observed MW

74kDa

Calculated MW

62kDa

Category

Primary antibody

Applications

WB, ELISA

Cross-Reactivity

Human

CloneNo number

ARC0293

Background

The protein encoded by this gene is a serine/threonine protein kinase that is activated by autophosphorylation after binding to dsRNA. The activated form of the encoded protein can phosphorylate translation initiation factor EIF2S1, which in turn inhibits protein synthesis. This protein is also activated by manganese ions and heparin. The encoded protein plays an important role in the innate immune response against multiple DNA and RNA viruses.

Recommended Dilutions

WB 1:1000 - 1:4000

ELISA Recommended starting concentration is 1 µg/mL. Please optimize the concentration based on your specific assay requirements.

Immunogen Information

Gene ID

5610

Swiss Prot

P19525

Immunogen

Synthetic peptide. This information is considered to be commercially sensitive.

Synonyms

PKR; PRKR; DYT33; LEUDEN; EIF2AK1; PPP1R83; Phospho-PKR/EIF2AK2-T446

Contact

☎ | 400-999-6126

✉ | cn.market@abclonal.com.cn

🌐 | www.abclonal.com.cn

Product Information

Source

Rabbit

Isotype

IgG

Purification

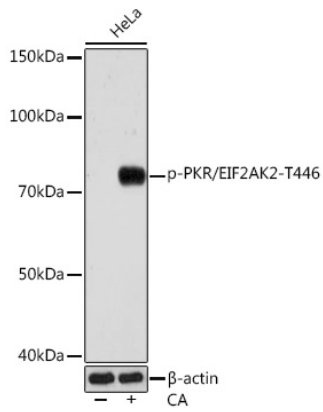
Affinity purification

Storage

Store at -20°C. Avoid freeze / thaw cycles.

Buffer: PBS containing 50% glycerol and 0.05% BSA, preserved with proclin300 or sodium azide (as specified on the Certificate of Analysis), pH 7.3.

Validation Data



Western blot analysis of lysates from HeLa cells, using Phospho-PKR/EIF2AK2-T446 Rabbit mAb (A4869) at 1:1000 dilution. HeLa cells were treated with Calyculin A (100 nM) at 37°C for 30 minutes after serum-starvation overnight.
Secondary antibody: HRP-conjugated Goat anti-Rabbit IgG (H+L) (AS014) at 1:10000 dilution.
Lysates/proteins: 25µg per lane.
Blocking buffer: 3% BSA.
Detection: ECL Basic Kit (RM00020).
Exposure time: 3min.