

Phospho-Bcl-2-S87 Rabbit pAb

Catalog No.: AP1071

Basic Information

Observed MW

28kDa

Calculated MW

26kDa

Category

Primary antibody

Applications

WB, ELISA

Cross-Reactivity

Human, Rat

Background

This gene encodes an integral outer mitochondrial membrane protein that blocks the apoptotic death of some cells such as lymphocytes. Constitutive expression of BCL2, such as in the case of translocation of BCL2 to Ig heavy chain locus, is thought to be the cause of follicular lymphoma. Alternative splicing results in multiple transcript variants.

Recommended Dilutions

WB 1:500 - 1:2000

ELISA Recommended starting concentration is 1 µg/mL. Please optimize the concentration based on your specific assay requirements.

Immunogen Information

Gene ID

596

Swiss Prot

P10415

Immunogen

Synthetic peptide. This information is considered to be commercially sensitive.

Synonyms

Bcl-2; PPP1R50; Phospho-Bcl-2-S87

Contact

 | 400-999-6126

 | cn.market@abclonal.com.cn

 | www.abclonal.com.cn

Product Information

Source

Rabbit

Isotype

IgG

Purification

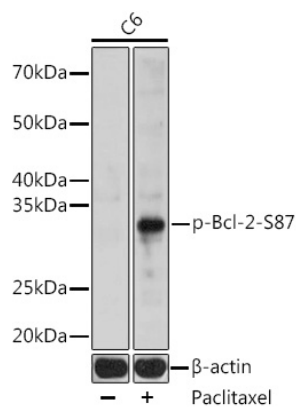
Affinity purification

Storage

Store at -20°C. Avoid freeze / thaw cycles.

Buffer: PBS with 0.01% thimerosal, 50% glycerol, pH7.3.

Validation Data



Western blot analysis of lysates from C6 cells, using Phospho-Bcl-2-S87 Rabbit pAb (AP1071) at 1:1000 dilution. C6 cells were treated with Paclitaxel (100 nM) at 37°C for 20 hours.
Secondary antibody: HRP-conjugated Goat anti-Rabbit IgG (H+L) (AS014) at 1:10000 dilution.
Lysates/proteins: 25µg per lane.
Blocking buffer: 3% BSA.
Detection: ECL Basic Kit (RM00020).
Exposure time: 10s.