

Phospho-Raf1-S259 Rabbit mAb

Catalog No.: AP1012 **Recombinant** **2 Publications**

Basic Information

Observed MW

73kDa/75kDa

Calculated MW

73kDa

Category

Primary antibody

Applications

WB, ELISA

Cross-Reactivity

Human, Rat

CloneNo number

ARC1557

Background

This gene is the cellular homolog of viral raf gene (v-raf). The encoded protein is a MAP kinase kinase kinase (MAP3K), which functions downstream of the Ras family of membrane associated GTPases to which it binds directly. Once activated, the cellular RAF1 protein can phosphorylate to activate the dual specificity protein kinases MEK1 and MEK2, which in turn phosphorylate to activate the serine/threonine specific protein kinases, ERK1 and ERK2. Activated ERKs are pleiotropic effectors of cell physiology and play an important role in the control of gene expression involved in the cell division cycle, apoptosis, cell differentiation and cell migration. Mutations in this gene are associated with Noonan syndrome 5 and LEOPARD syndrome 2.

Recommended Dilutions

WB 1:500 - 1:1000

ELISA Recommended starting concentration is 1 µg/mL. Please optimize the concentration based on your specific assay requirements.

Immunogen Information

Gene ID

5894

Swiss Prot

P04049

Immunogen

Synthetic peptide. This information is considered to be commercially sensitive.

Synonyms

NS5; CRAF; Raf-1; c-Raf; CMD1NN; Phospho-Raf1-S259

Contact

 | 400-999-6126

 | cn.market@abclonal.com.cn

 | www.abclonal.com.cn

Product Information

Source

Rabbit

Isotype

IgG

Purification

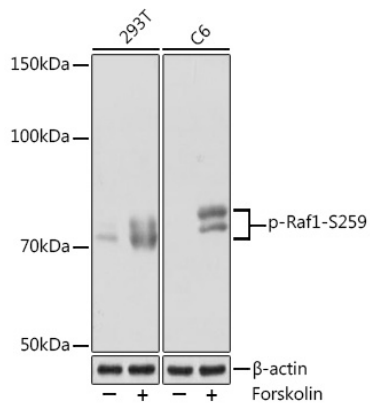
Affinity purification

Storage

Store at -20°C. Avoid freeze / thaw cycles.

Buffer: PBS containing 50% glycerol and 0.05% BSA, preserved with proclin300 or sodium azide (as specified on the Certificate of Analysis), pH 7.3.

Validation Data



Western blot analysis of various lysates using Phospho-Raf1-S259 Rabbit mAb (AP1012) at 1:1000 dilution. Both 293T cells and C6 cells were treated with Forskolin (10 μ M) at 37°C for 1 hour after serum-starvation overnight.
Secondary antibody: HRP-conjugated Goat anti-Rabbit IgG (H+L) (AS014) at 1:10000 dilution.
Lysates/proteins: 25 μ g per lane.
Blocking buffer: 3% BSA.
Detection: ECL Basic Kit (RM00020).
Exposure time: 30s.