

# Phospho-EPHA2-Y594 Rabbit pAb

Catalog No.: AP0818

1 Publications

## Basic Information

### Observed MW

108kDa

### Calculated MW

108kDa

### Category

Primary antibody

### Applications

ELISA, WB

### Cross-Reactivity

Human, Rat

## Background

This gene belongs to the ephrin receptor subfamily of the protein-tyrosine kinase family. EPH and EPH-related receptors have been implicated in mediating developmental events, particularly in the nervous system. Receptors in the EPH subfamily typically have a single kinase domain and an extracellular region containing a Cys-rich domain and 2 fibronectin type III repeats. The ephrin receptors are divided into 2 groups based on the similarity of their extracellular domain sequences and their affinities for binding ephrin-A and ephrin-B ligands. This gene encodes a protein that binds ephrin-A ligands. Mutations in this gene are the cause of certain genetically-related cataract disorders.

## Recommended Dilutions

WB 1:500 - 1:2000

## Immunogen Information

### Gene ID

1969

### Swiss Prot

P29317

### Immunogen

A synthetic phosphorylated peptide around Y594 of human EphA2 (NP\_004422.2).

### Synonyms

ECK; CTPA; ARCC2; CTPP1; CTRCT6; Phospho-EPHA2-Y594

## Contact

☎ | 400-999-6126

✉ | [cn.market@abclonal.com.cn](mailto:cn.market@abclonal.com.cn)

🌐 | [www.abclonal.com.cn](http://www.abclonal.com.cn)

## Product Information

### Source

Rabbit

### Isotype

IgG

### Purification

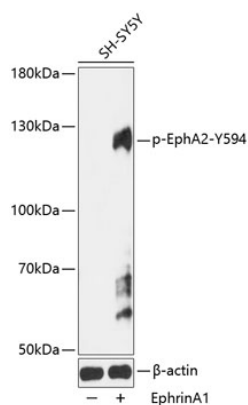
Affinity purification

### Storage

Store at -20°C. Avoid freeze / thaw cycles.

Buffer: PBS with 0.01% thimerosal, 50% glycerol, pH7.3.

## Validation Data



Western blot analysis of lysates from SH-SY5Y cells, using Phospho-EPHA2-Y594 Rabbit pAb (AP0818) at 1:1000 dilution. SH-SY5Y cells were treated by EphrinA1 (100 ng/mL) for 5 minutes .  
Secondary antibody: HRP Goat Anti-Rabbit IgG (H+L) (AS014) at 1:10000 dilution.  
Lysates/proteins: 25µg per lane.  
Blocking buffer: 3% BSA.  
Detection: ECL Basic Kit (RM00020).  
Exposure time: 60s.