

# Phospho-HP1 gamma/CBX3-S83 Rabbit pAb

Catalog No.: AP0801

## Basic Information

### Observed MW

22kDa

### Calculated MW

21kDa

### Category

Primary antibody

### Applications

WB, ELISA

### Cross-Reactivity

Human, Mouse

## Background

At the nuclear envelope, the nuclear lamina and heterochromatin are adjacent to the inner nuclear membrane. The protein encoded by this gene binds DNA and is a component of heterochromatin. This protein also can bind lamin B receptor, an integral membrane protein found in the inner nuclear membrane. The dual binding functions of the encoded protein may explain the association of heterochromatin with the inner nuclear membrane. This protein binds histone H3 tails methylated at Lys-9 sites. This protein is also recruited to sites of ultraviolet-induced DNA damage and double-strand breaks. Two transcript variants encoding the same protein but differing in the 5' UTR, have been found for this gene.

## Recommended Dilutions

**WB** 1:500 - 1:1000

**ELISA** Recommended starting concentration is 1 µg/mL. Please optimize the concentration based on your specific assay requirements.

## Immunogen Information

### Gene ID

11335

### Swiss Prot

Q13185

### Immunogen

Synthetic peptide. This information is considered to be commercially sensitive.

### Synonyms

HECH; HP1-GAMMA; HP1Hs-gamma; Phospho-HP1 gamma/CBX3-S83

## Contact

☎ | 400-999-6126

✉ | [cn.market@abclonal.com.cn](mailto:cn.market@abclonal.com.cn)

🌐 | [www.abclonal.com.cn](http://www.abclonal.com.cn)

## Product Information

### Source

Rabbit

### Isotype

IgG

### Purification

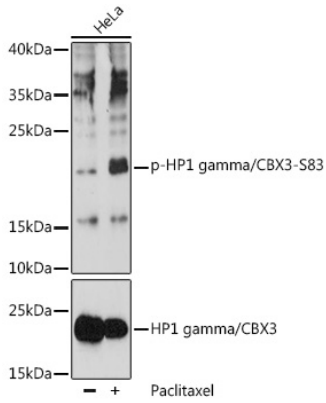
Affinity purification

### Storage

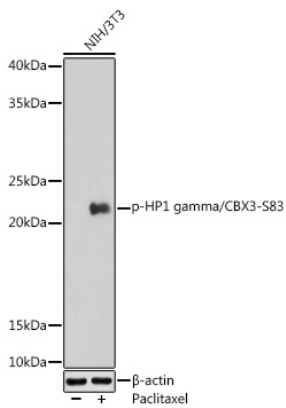
Store at -20°C. Avoid freeze / thaw cycles.

Buffer: PBS with 0.01% thimerosal, 50% glycerol, pH7.3.

## Validation Data



Western blot analysis of lysates from HeLa cells, using Phospho-HP1 gamma/CBX3-S83 pAb (AP0801) at 1:1000 dilution or HP1 gamma/CBX3 antibody (A2248). HeLa cells were treated with Paclitaxel (100 nM/mL) at 37°C for 20 hours.  
Secondary antibody: HRP-conjugated Goat anti-Rabbit IgG (H+L) (AS014) at 1:10000 dilution.  
Lysates/proteins: 25µg per lane.  
Blocking buffer: 3% BSA.  
Detection: ECL Basic Kit (RM00020).  
Exposure time: 60s.



Western blot analysis of lysates from NIH/3T3 cells, using Phospho-HP1 gamma/CBX3-S83 Rabbit pAb (AP0801) at 1:1000 dilution. NIH/3T3 cells were treated with Paclitaxel (100 nM) at 37°C for 20 hours.  
Secondary antibody: HRP-conjugated Goat anti-Rabbit IgG (H+L) (AS014) at 1:10000 dilution.  
Lysates/proteins: 25µg per lane.  
Blocking buffer: 3% nonfat dry milk in TBST.  
Detection: ECL Enhanced Kit (RM00021).  
Exposure time: 180s.