

HRP-conjugated Rabbit anti His-Tag mAb

Catalog No.: AE104

6 Publications

Basic Information

Observed MW

17kDa(NPPA-His)/35kDa[EPCAM-His]

Calculated MW

Category

Tag antibody

Applications

WB,ELISA

Cross-Reactivity

Species independent

CloneNo number

ARC2696-HRP

Conjugate

HRP

Background

Consecutive histidine residues (usually 6 to 10 in length) are often inserted into the amino acid sequences of recombinant proteins. The resulting His-tagged proteins can be detected by using His antibodies.

Recommended Dilutions

WB 1:2000 - 1:10000

ELISA Recommended starting concentration is 1 µg/mL. Please optimize the concentration based on your specific assay requirements.

Immunogen Information

Gene ID

Swiss Prot

Immunogen

Synthetic peptide. This information is considered to be commercially sensitive.

Synonyms

His;His tag;His-tag

Contact

☎ | 400-999-6126

✉ | cn.market@abclonal.com.cn

🌐 | www.abclonal.com.cn

Product Information

Source

Rabbit

Isotype

IgG2B,Kappa

Purification

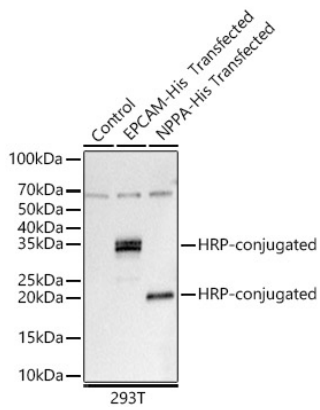
Affinity purification

Storage

Store at -20°C. Avoid freeze / thaw cycles.

Buffer: PBS containing 50% glycerol and 0.2% BSA, preserved with proclin300 or sodium azide (as specified on the Certificate of Analysis), pH 7.3

Validation Data



Western blot analysis of extracts of normal 293T cells, 293T transfected with EPCAM-His and 293T transfected with NPPA-His Protein, using HRP-conjugated Rabbit anti His-Tag mAb (AE104) at 1:10000 dilution.

Lysates/proteins: 25µg per lane.

Blocking buffer: 3% nonfat dry milk in TBST.

Detection: ECL Basic Kit (RM00020).

Exposure time: 0.09s.