

A-RAF Rabbit mAb

Catalog No.: A8687

Recombinant

1 Publications

Basic Information

Observed MW

68kDa

Calculated MW

68kDa

Category

Primary antibody

Applications

WB,IHC-P,ELISA

Cross-Reactivity

Human

CloneNo number

ARC1782

Background

Enables protein serine/threonine kinase activity. Involved in negative regulation of apoptotic process; regulation of TOR signaling; and regulation of cellular protein metabolic process. Predicted to be active in cytosol and mitochondrion. Biomarker of high grade glioma.

Recommended Dilutions

WB 1:500 - 1:1000

IHC-P 1:50 - 1:200

ELISA Recommended starting concentration is 1 µg/mL. Please optimize the concentration based on your specific assay requirements.

Immunogen Information

Gene ID

369

Swiss Prot

P10398

Immunogen

Recombinant protein (or fragment). This information is considered to be commercially sensitive.

Synonyms

PKS2; A-RAF; ARAF1; RAFA1

Contact

☎ | 400-999-6126

✉ | cn.market@abclonal.com.cn

🌐 | www.abclonal.com.cn

Product Information

Source

Rabbit

Isotype

IgG

Purification

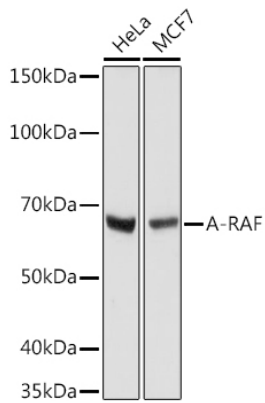
Affinity purification

Storage

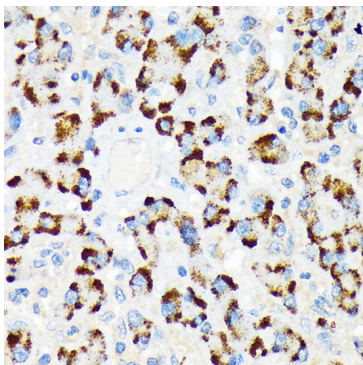
Store at -20°C. Avoid freeze / thaw cycles.

Buffer: PBS containing 50% glycerol and 0.05% BSA, preserved with proclin300 or sodium azide (as specified on the Certificate of Analysis), pH 7.3.

Validation Data



Western blot analysis of various lysates using A-RAF Rabbit mAb (A8687) at 1:1000 dilution.
Secondary antibody: HRP-conjugated Goat anti-Rabbit IgG (H+L) (AS014) at 1:10000 dilution.
Lysates/proteins: 25µg per lane.
Blocking buffer: 3% nonfat dry milk in TBST.
Detection: ECL Basic Kit (RM00020).
Exposure time: 10s.



Immunohistochemistry analysis of paraffin-embedded Human liver using A-RAF Rabbit mAb (A8687) at dilution of 1:100 (40x lens). Microwave antigen retrieval performed with 0.01M Tris/EDTA Buffer (pH 9.0) prior to IHC staining.