

CEACAM7 Rabbit pAb

Catalog No.: A8112 **1 Publications**

Basic Information

Observed MW

29kDa

Calculated MW

29kDa

Category

Primary antibody

Applications

WB, ELISA

Cross-Reactivity

Human, Mouse, Rat

Background

This gene encodes a cell surface glycoprotein and member of the carcinoembryonic antigen (CEA) family of proteins. Expression of this gene may be downregulated in colon and rectal cancer. Additionally, lower expression levels of this gene may be predictive of rectal cancer recurrence. This gene is present in a CEA family gene cluster on chromosome 19. Alternative splicing results in multiple transcript variants.

Recommended Dilutions

WB 1:500 - 1:2000

ELISA Recommended starting concentration is 1 µg/mL. Please optimize the concentration based on your specific assay requirements.

Immunogen Information

Gene ID

1087

Swiss Prot

Q14002

Immunogen

Recombinant protein (or fragment). This information is considered to be commercially sensitive.

Synonyms

CGM2; CEACAM7

Contact

 | 400-999-6126

 | cn.market@abclonal.com.cn

 | www.abclonal.com.cn

Product Information

Source

Rabbit

Isotype

IgG

Purification

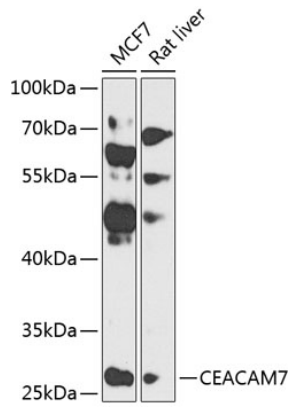
Affinity purification

Storage

Store at -20°C. Avoid freeze / thaw cycles.

Buffer: PBS containing 50% glycerol, preserved with proclin300 or sodium azide (as specified on the Certificate of Analysis), pH 7.3.

Validation Data



Western blot analysis of various lysates using CEACAM7 Rabbit pAb (A8112) at 1:1000 dilution.
Secondary antibody: HRP-conjugated Goat anti-Rabbit IgG (H+L) (AS014) at 1:10000 dilution.
Lysates/proteins: 25µg per lane.
Blocking buffer: 3% nonfat dry milk in TBST.
Detection: ECL Basic Kit (RM00020).
Exposure time: 90s.