

IL-15RA Rabbit mAb

Catalog No.: A25576 **Recombinant**

Basic Information

Observed MW

Refer to figures

Calculated MW

28kDa

Category

Primary antibody

Applications

IF/ICC,FC,ELISA

Cross-Reactivity

Mouse

CloneNo number

ARC66399

Background

Predicted to enable interleukin-15 receptor activity and protein kinase binding activity. Acts upstream of or within positive regulation of natural killer cell differentiation. Located in cytoplasmic vesicle and plasma membrane. Is expressed in central nervous system; retina; retina inner nuclear layer; and retina outer nuclear layer. Orthologous to human IL15RA (interleukin 15 receptor subunit alpha).

Recommended Dilutions

IF/ICC 1:200 - 1:800

FC 1:500 - 1:1000

ELISA Recommended starting concentration is 1 µg/mL. Please optimize the concentration based on your specific assay requirements.

Immunogen Information

Gene ID

16169

Swiss Prot

Q60819

Immunogen

Recombinant protein (or fragment). This information is considered to be commercially sensitive.

Synonyms

Il15ra

Contact

☎ | 400-999-6126

✉ | cn.market@abclonal.com.cn

🌐 | www.abclonal.com.cn

Product Information

Source

Rabbit

Isotype

IgG

Purification

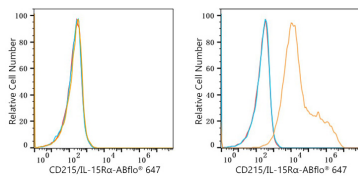
Affinity purification

Storage

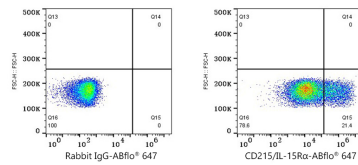
Store at -20°C. Avoid freeze / thaw cycles.

Buffer: PBS containing 50% glycerol and 0.05% BSA, preserved with proclin300 or sodium azide (as specified on the Certificate of Analysis), pH 7.3.

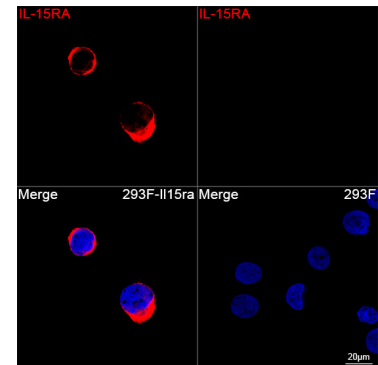
Validation Data



Flow cytometry: 1×10^6 CHO cells (negative control, left) and CHO (Transfection, right) cells were surface-stained with IL-15RA Rabbit mAb (A25576, 2 $\mu\text{g}/\text{mL}$, orange line) or ABflo® 647 Rabbit IgG isotype control (A22070, 5 $\mu\text{l}/\text{Test}$, blue line), followed by Alexa Fluor® 647 conjugated goat anti-rabbit pAb staining. Non-fluorescently stained cells were used as blank control (red line).



Flow cytometry: 1×10^6 CHO (Transfection) cells were surface-stained with ABflo® 647 Rabbit IgG isotype control (A22070, 5 $\mu\text{l}/\text{Test}$, left) or IL-15RA Rabbit mAb (A25576, 2 $\mu\text{g}/\text{mL}$, right).



Confocal imaging of 293F transfected with IL-15RA and 293F cells using IL-15RA Rabbit mAb (A25576, dilution 1:200) followed by a further incubation with Cy3 Goat Anti-Rabbit IgG (H+L) (AS007, dilution 1:500) (Red). DAPI was used for nuclear staining (Blue). Objective: 100x.