

PE Rat anti-Mouse Ly-6G/Ly-6C (Gr-1) mAb

Catalog No.: A26900

Basic Information

Observed MW

Calculated MW

14kDa

Category

Primary antibody

Applications

FC

Cross-Reactivity

Mouse

CloneNo number

ATC0033

Conjugate

PE. Ex:565nm. Em:574nm.

Background

Located in external side of plasma membrane.

Recommended Dilutions

FC 5 μ l per 10^6 cells in
100 μ l volume

Immunogen Information

Gene ID

546644/17067

Swiss Prot

P35461/P0CW02

Immunogen

Recombinant protein (or fragment). This information is considered to be commercially sensitive.

Synonyms

Gr1; Gr-1; Ly-6G

Contact

☎ | 400-999-6126

✉ | cn.market@abclonal.com.cn

🌐 | www.abclonal.com.cn

Product Information

Source

Rat

Isotype

IgG

Purification

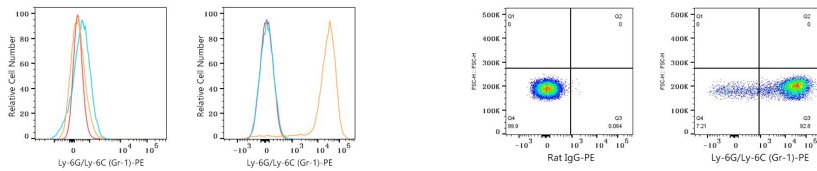
Affinity purification

Storage

Store at 2-8°C. Avoid freeze.

Buffer: PBS with 0.09% Sodium azide, 0.2% BSA, pH7.3.

Validation Data



Flow cytometry: 1×10^6 Neuro-2a cells (negative control, left) and C57BL/6 mouse bone marrow cells (right) were surface-stained with PE Rat anti-Mouse Ly-6G/Ly-6C (Gr-1) mAb (A26900, 5 μ l/Test, orange line) or PE Rat IgG isotype control (5 μ l/Test, blue line). Non-fluorescently stained cells were used as blank control (red line).

Flow cytometry: 1×10^6 C57BL/6 mouse bone marrow cells were surface-stained with PE Rat IgG isotype control (5 μ l/Test, left) or PE Rat anti-Mouse Ly-6G/Ly-6C (Gr-1) mAb (A26900, 5 μ l/Test, right).