

SLC18A3 Rabbit pAb

Catalog No.: A16068 **3 Publications**

Basic Information

Observed MW

65kDa

Calculated MW

57kDa

Category

Primary antibody

Applications

IF-P,IHC-P,ELISA

Cross-Reactivity

Mouse, Rat

Background

This gene is a member of the vesicular amine transporter family. The encoded transmembrane protein transports acetylcholine into secretory vesicles for release into the extracellular space. Acetylcholine transport utilizes a proton gradient established by a vacuolar ATPase. This gene is located within the first intron of the choline acetyltransferase gene.

Recommended Dilutions

IF-P 1:50 - 1:200

IHC-P 1:50 - 1:200

ELISA Recommended starting concentration is 1 µg/mL. Please optimize the concentration based on your specific assay requirements.

Immunogen Information

Gene ID

6572

Swiss Prot

Q16572

Immunogen

Recombinant protein (or fragment). This information is considered to be commercially sensitive.

Synonyms

CMS21; VACHT; SLC18A3

Contact

☎ | 400-999-6126

✉ | cn.market@abclonal.com.cn

🌐 | www.abclonal.com.cn

Product Information

Source

Rabbit

Isotype

IgG

Purification

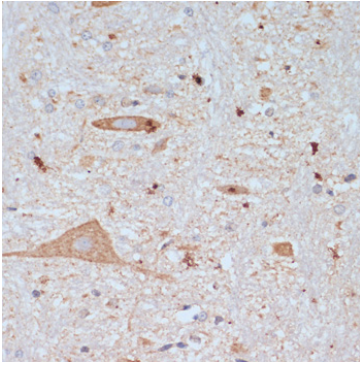
Affinity purification

Storage

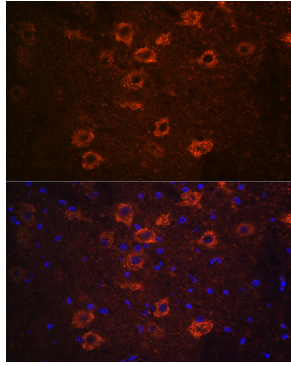
Store at -20°C. Avoid freeze / thaw cycles.

Buffer: PBS, pH 7.3, containing 50% glycerol. Preserved with Proclin300 or sodium azide. May contain 0.05% BSA as specified on the Certificate of Analysis.

Validation Data



Immunohistochemistry analysis of paraffin-embedded Rat brain using SLC18A3 Rabbit pAb (A16068) at dilution of 1:200 (40x lens). Microwave antigen retrieval performed with 0.01M PBS Buffer (pH 7.2) prior to IHC staining.



Immunofluorescence analysis of paraffin-embedded mouse brain using SLC18A3 Rabbit pAb (A16068) at dilution of 1:100 (40x lens). Secondary antibody: Cy3-conjugated Goat anti-Rabbit IgG (H+L) (AS007) at 1:500 dilution. Blue: DAPI for nuclear staining.