

Human CD52 Monoclonal Antibody

Catalog No.: YR0012

Basic Information

Molecular Weight

150 kDa

Endotoxin

<1EU/mg (<0.001EU/μg) Determined by LAL gel clotting assay

Sterility

0.2 μm filtration

Aggregation

<5% Determined by SECP

Purity

>95% Determined by SDS-PAGE

Background

Alemtuzumab Biosimilar uses the same protein sequences as the therapeutic antibody alemtuzumab. Alemtuzumab is a medication used to treat chronic lymphocytic leukemia (CLL) and multiple sclerosis. In CLL, it has been used as both a first line and second line treatment. In MS it is generally only recommended if other treatments have not worked. It is given by injection into a vein. It is a monoclonal antibody that binds to CD52, a protein present on the surface of mature lymphocytes, but not on the stem cells from which these lymphocytes are derived. After treatment with alemtuzumab, these CD52-bearing lymphocytes are targeted for destruction.

Reported Applications

ELISA, neutralization, functional assays such as bioanalytical PK and ADA assays, and those assays for studying biological pathways

Immunogen Information

Clone

Alemtuzumab Biosimilar

Isotype

Human IgG1 kappa

Immunogen

Human CD52

Recommended Isotype Control(s)

In Vivo Grade Recombinant Human IgG1 Kappa Isotype Control Antibody

Recommended Dilution Buffer

1×PBS pH 7.3

Contact

☎ | 400-999-6126

✉ | cn.market@abclonal.com.cn

🌐 | www.abclonal.com.cn

Product Information

Production

Purified from cell culture supernatant in an animal-free facility

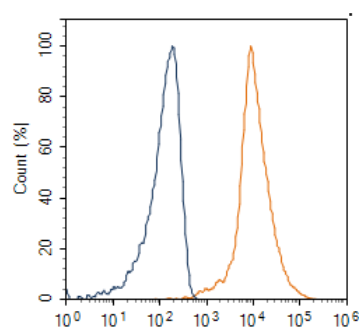
Purification

Protein A or G purification

Storage

Store at 2 - 8°C. 2 - 8°C for up to 4 weeks and -80°C for long term storage (Avoid repeated freezing and thawing)

Validation Data



Detection of CD52 in Human PBMCs cell line by Flow Cytometry. Human PBMCs cell line was stained with Biotinylated Human Anti-Human CD52(Alemtuzumab Biosimilar) Monoclonal Antibody followed by APC conjugated NeutrAvidin Secondary Antibody, or unstained cells (open blue histogram).