

# Human EGFR Monoclonal Antibody

Catalog No.: YR0011

## Basic Information

### Molecular Weight

150 kDa

### Endotoxin

<1EU/mg (<0.001EU/μg) Determined by LAL gel clotting assay

### Sterility

0.2 μm filtration

### Aggregation

<5% Determined by SECP

### Purity

>95% Determined by SEC-HPLC

## Background

Cetuximab, a chimeric (mouse/human) anti-EGFR monoclonal antibody, is an EGFR inhibitor used for the treatment of metastatic colorectal cancer and head and neck cancer. Cetuximab binds to EGFR and turns off the uncontrolled growth in cancers with EGFR mutations. Cetuximab can be used for treatment of KRAS wild type colon cancer but has little or no effect in colorectal tumors harboring a KRAS mutation. Before treatment using Erbitux, it is better to do a diagnosis using the real time PCR companion diagnostic test for KRAS, the therascreen KRAS test.

## Reported Applications

ELISA, neutralization, functional assays such as bioanalytical PK and ADA assays, and those assays for studying biological pathways

## Immunogen Information

### Clone

Cetuximab Biosimilar

### Isotype

Human IgG1 kappa

### Immunogen

Human EGFR

### Recommended Isotype Control(s)

In Vivo Grade Recombinant Human IgG1 Kappa Isotype Control Antibody

### Recommended Dilution Buffer

1×PBS pH 7.3

## Contact

☎ | 400-999-6126

✉ | [cn.market@abclonal.com.cn](mailto:cn.market@abclonal.com.cn)

🌐 | [www.abclonal.com.cn](http://www.abclonal.com.cn)

## Product Information

### Production

Purified from cell culture supernatant in an animal-free facility

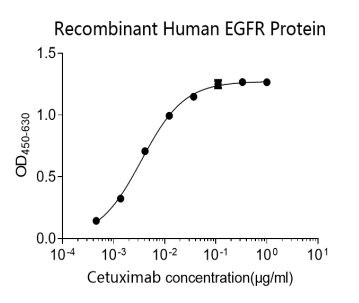
### Purification

Protein A or G purification

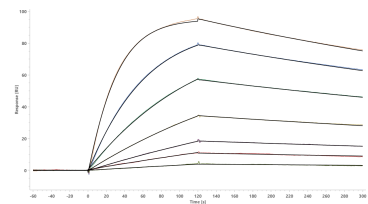
### Storage

Store at 2 - 8°C. 2 - 8°C for up to 4 weeks and -80°C for long term storage (Avoid repeated freezing and thawing)

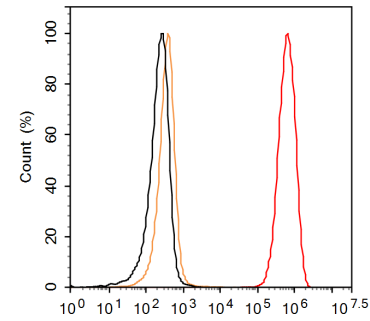
Validation Data



Direct ELISA binding curve demonstrating the recognition of Human Anti-Human EGFR (Research Grade Cetuximab Biosimilar) Monoclonal Antibody to EGFR. The target protein was coated onto the microplate well surface, followed by binding of the antibody. A donkey anti-human IgG HRP conjugate was used for detection.



Human EGFR SPR assay. Determined through SPR assay, the Human Anti-Human EGFR (Research Grade Cetuximab Biosimilar) Monoclonal Antibody is capable of binding to Human EGFR with an affinity constant of 0.2295 nM.



Detection of EGFR in A431 cell line by Flow Cytometry. A431 cell line was stained with Human Anti-Human EGFR( Cetuximab Biosimilar) Monoclonal Antibody followed by APC conjugated Anti-Human IgG Secondary Antibody, or unstained cells (open yellow histogram).