

Human IL-6R Monoclonal Antibody

Catalog No.: YR0003

Basic Information

Molecular Weight

150 kDa

Endotoxin

<1EU/mg (<0.001EU/μg) Determined by LAL gel clotting assay

Sterility

0.2 μm filtration

Aggregation

<5% Determined by SECP

Purity

>95% Determined by SEC-HPLC

Background

What is tocilizumab biosimilar research grade? Tocilizumab biosimilar uses the same protein sequences as the therapeutic antibody tocilizumab. Tocilizumab is a recombinant humanized monoclonal antibody IL-6 receptor inhibitor used to treat inflammatory and autoimmune conditions. Interleukin 6 (IL-6) is a pro-inflammatory cytokine produced by cells including T-cells, B-cells, lymphocytes, monocytes, fibroblasts. IL-6 rapidly induces C-reactive protein, serum amyloid A, fibrinogen, haptoglobin, and α-1-antichymotrypsin while inhibiting production of fibronectin, albumin, and transferrin. IL-6 also induces antibody production, induces cytotoxic T-cell differentiation, and inhibits regulatory T-cell differentiation. Tocilizumab binds soluble and membrane bound IL-6 receptors, preventing IL-6 mediated inflammation.

Reported Applications

ELISA, neutralization, functional assays such as bioanalytical PK and ADA assays, and those assays for studying biological pathways

Immunogen Information

Clone

Tocilizumab Biosimilar

Isotype

human IgG1 kappa

Immunogen

Human IL-6R

Recommended Isotype Control(s)

In Vivo Grade Recombinant Human IgG1 Kappa Isotype Control Antibody

Recommended Dilution Buffer

1×PBS pH 7.3

Contact

☎ | 400-999-6126

✉ | cn.market@abclonal.com.cn

🌐 | www.abclonal.com.cn

Product Information

Production

Purified from cell culture supernatant in an animal-free facility

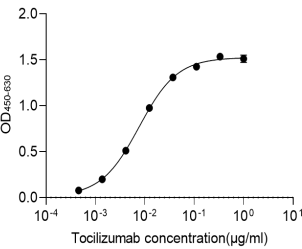
Purification

Protein A or G purification

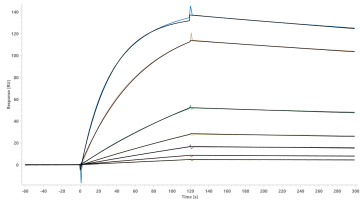
Storage

Store at 2 - 8°C. 2 - 8°C for up to 4 weeks and -80°C for long term storage (Avoid repeated freezing and thawing)

Recombinant Human IL-6RA/CD126 Protein



Direct ELISA binding curve demonstrating the recognition of Human Anti-Human IL-6RA (Research Grade Tocilizumab Biosimilar) Monoclonal Antibody to IL-6RA. The target protein was coated onto the microplate well surface, followed by binding of the antibody. A donkey anti-human IgG HRP conjugate was used for detection.



Human IL-6RA SPR assay. Determined through SPR assay, the Human Anti-Human IL-6RA (Research Grade Tocilizumab Biosimilar) Monoclonal Antibody is capable of binding to Human IL-6RA with an affinity constant of 1.847 nM.