

Human PD-1 Monoclonal Antibody

Catalog No.: YR0001

Basic Information

Molecular Weight

150 kDa

Endotoxin

<1EU/mg (<0.001EU/μg) Determined by LAL gel clotting assay

Sterility

0.2 μm filtration

Aggregation

<5% Determined by SECP

Purity

>95% Determined by SEC-HPLC

Background

What is Pembrolizumab biosimilar research grade? Pembrolizumab is a highly selective IgG4-kappa humanized monoclonal antibody against PD-1 receptor. It was generated by grafting the variable sequences of a very high-affinity mouse antihuman PD-1 antibody onto a human IgG4-kappa isotype with the containing a stabilizing S228P Fc mutation. It contains 32 cysteine residues and the complete folded molecule includes 4 disulfide linkages as interchain bonds and 23 interchain bonds. Pembrolizumab Biosimilar uses the same protein sequences as the therapeutic antibody pembrolizumab.

Reported Applications

ELISA, neutralization, functional assays such as bioanalytical PK and ADA assays, and those assays for studying biological pathways

Immunogen Information

Clone

Pembrolizumab Biosimilar

Isotype

human IgG4 kappa

Immunogen

Human PD-1

Recommended Isotype Control(s)

In Vivo Grade Recombinant Human IgG4-S228P Kappa Isotype Control Antibody

Recommended Dilution Buffer

1×PBS pH 7.3

Contact

☎ | 400-999-6126

✉ | cn.market@abclonal.com.cn

🌐 | www.abclonal.com.cn

Product Information

Production

Purified from cell culture supernatant in an animal-free facility

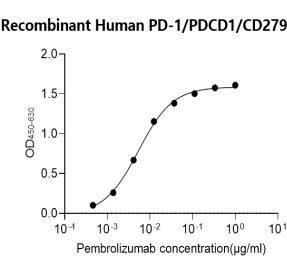
Purification

Protein A or G purification

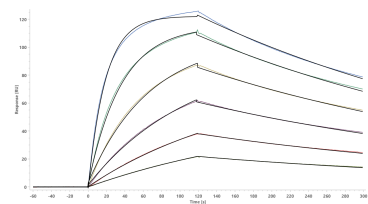
Storage

Store at 2 - 8°C. 2 - 8°C for up to 4 weeks and -80°C for long term storage (Avoid repeated freezing and thawing)

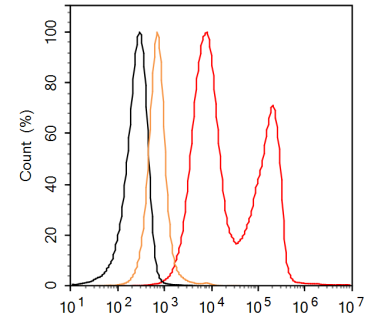
Recombinant Human PD-1/PDCD1/CD279 Protein



Direct ELISA binding curve demonstrating the recognition of Human Anti-Human PD-1 (Research Grade Pembrolizumab Biosimilar) Monoclonal Antibody to PD-1. The target protein was coated onto the microplate well surface, followed by binding of the antibody. A donkey anti-human IgG HRP conjugate was used for detection.



Determined through SPR assay, the Human Anti-Human PD-1 (Research Grade Pembrolizumab Biosimilar) Monoclonal Antibody is capable of binding to Human PD-1 with an affinity constant of 1.282 nM.



Detection of PD-1 in HEK 293 cells by Flow Cytometry. HEK 293 cells transfected hPD-1 was stained with Human Anti-Human PD-1 (Research Grade Pembrolizumab Biosimilar) Monoclonal Antibody followed by APC conjugated Anti-Human IgG Secondary Antibody, or unstained cells (open yellow histogram).