

**Catalog No.: RPT0013** **Recombinant**

Species	Gene ID	Swiss Prot
Mouse		P06336

C-His

## IgE

<b>Source</b>	<b>Purification</b>
HEK293 cells	≥ 95% as determined by SDS-PAGE.

Calculated MW	Observed MW
38.99 kDa	45-75 kDa

< 0.1 EU/μg of the protein by LAL method.

Lyophilized from a 0.22  $\mu\text{m}$  filtered solution of PBS, pH 7.4.

Centrifuge the vial before opening. Reconstitute to a concentration of 0.1-0.5 mg/mL in sterile distilled water. Avoid vortex or vigorously pipetting the protein. For long term storage, it is recommended to add a carrier protein or stabilizer (e.g. 0.1% BSA, 5% HSA, 10% FBS or 5% Trehalose), and aliquot the reconstituted protein solution to minimize free-thaw cycles.

As one of the five designated immunoglobulin isotypes, immunoglobulin E (IgE) plays a major role in atopic conditions by inducing immediate hypersensitivity reactions. IgE also contributes significantly to the body's immune response to parasitic infections. IgE antibodies are predominantly found in the tissues, firmly attached to effector cells, such as mast cells and basophils, by high-affinity IgE Fc receptor (Fc epsilon RI) and low-affinity IgE receptor (Fc epsilon RI).

Recombinant Mouse IgE Protein is produced by HEK293 cells expression system. The target protein is expressed with sequence (Pro50-Lys388) of mouse IgE (Accession #) fused with and 6xHis tag at the C-terminus.

Measured by its binding ability in a functional ELISA. Immobilized Mouse IgE (Catalog: RPT0013) at 1 µg/mL (100 µL/well) can bind Mouse IgE Rabbit mAb(Catalog: A23195) with a linear range of 0.06-0.45 ng/mL.

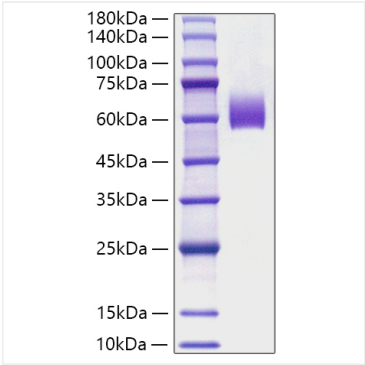
Store at -20°C. Store the lyophilized protein at -20°C to -80 °C up to 1 year from the date of receipt.  
After reconstitution, the protein solution is stable at -20°C for 3 months, at 2-8°C for up to 1 week.  
Avoid repeated freeze/thaw cycles.

 | 400-999-6126

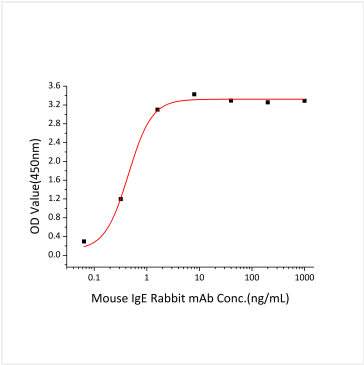
 | [cn.market@abclonal.com.cn](mailto:cn.market@abclonal.com.cn)

 | [www.abclonal.com.cn](http://www.abclonal.com.cn)

# Validation Data



Recombinant Mouse IgE Protein was determined by SDS-PAGE under reducing conditions with Coomassie Blue.



Immobilized Mouse IgE (Catalog: RPT0013) at 1  $\mu$ g/mL (100  $\mu$ L/well) can bind Mouse IgE Rabbit mAb(Catalog: A23195) with a linear range of 0.06-0.45 ng/mL.